

\$299,900 - 404 69 Crystal Lane, Sherwood Park

MLS® #E4461107

\$299,900

2 Bedroom, 2.00 Bathroom, 1,053 sqft

Condo / Townhouse on 0.00 Acres

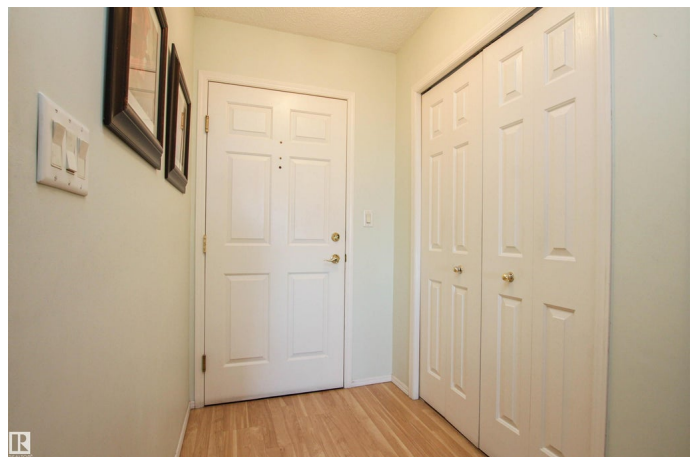
Durham Town Square, Sherwood Park, AB

Wonderful TOP FLOOR 2 bed, 2 bath condo in sought after Heritage Crystal Manor! This well-appointed unit is beautifully cared for and features newer laminate flooring throughout. The kitchen offers white cabinetry and a spacious pantry. Beyond the kitchen is the dining nook and bright living room. Off of the living space is the North-facing balcony. The primary bedroom is very spacious and offers double closets and a 4-piece ensuite. On the opposite side of the unit you will find the second bedroom, laundry room and 3-piece bathroom. This condo has a wonderful sense of community, with regular social events! The amenities are unbeatable - large event room with kitchen, exercise room, library, theatre room, family gathering room, games room w/ pool table, 2 guest suites, and outdoor patio space! This unit also comes with assigned heated, underground parking & storage cage PLUS additional storage room across from unit, on 4th floor! Wonderful condo, with convenient, central Sherwood Park location.

Built in 2000

Essential Information

MLS® #	E4461107
Price	\$299,900
Bedrooms	2



Bathrooms	2.00
Full Baths	2
Square Footage	1,053
Acres	0.00
Year Built	2000
Type	Condo / Townhouse
Sub-Type	Lowrise Apartment
Style	Single Level Apartment
Status	Active

Community Information

Address	404 69 Crystal Lane
Area	Sherwood Park
Subdivision	Durham Town Square
City	Sherwood Park
County	ALBERTA
Province	AB
Postal Code	T8H 2E9

Amenities

Amenities	Car Wash, Exercise Room, Guest Suite, Party Room, Social Rooms, Storage-Locker Room, Storage Cage
Parking Spaces	1
Parking	Heated, Parkade, Underground

Interior

Interior Features	ensuite bathroom
Appliances	Hood Fan, Refrigerator, Stacked Washer/Dryer, Stove-Electric, Window Coverings
Heating	In Floor Heat System, Water
# of Stories	4
Stories	1
Has Basement	Yes
Basement	None, No Basement

Exterior

Exterior	Wood, Stucco
Exterior Features	Picnic Area, Playground Nearby, Public Transportation, Shopping Nearby, See Remarks

Roof	Asphalt Shingles
Construction	Wood, Stucco
Foundation	Concrete Perimeter

Additional Information

Date Listed	October 7th, 2025
Days on Market	1
Zoning	Zone 25
Condo Fee	\$576

DATA IS DEEMED RELIABLE BUT IS NOT GUARANTEED ACCURATE BY THE REALTORS® ASSOCIATION OF EDMONTON. COPYRIGHT 2025 BY THE REALTORS® ASSOCIATION OF EDMONTON. ALL RIGHTS RESERVED.Trademarks are owned or controlled by the Canadian Real Estate Association (CREA) and identify real estate professionals who are members of CREA (REALTOR®, REALTORS®) and/or the quality of services they provide (MLS®, Multiple Listing Service®)

Listing information last updated on October 8th, 2025 at 5:02am MDT