

Courtesy Of Ryan J Boser Of Sarasota Realty

\$389,900 - 107 Andrews Crescent, Spruce Grove

MLS® #E4460440

\$389,900

3 Bedroom, 1.50 Bathroom, 1,525 sqft
Single Family on 0.00 Acres

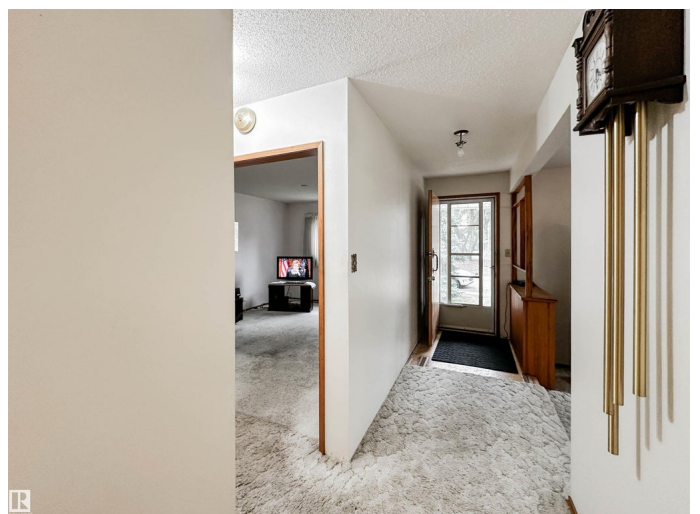
City Centre, Spruce Grove, AB

Located in the heart of Spruce Grove, this pristine bungalow is a wonderful opportunity for any first time buyer or investor!! Original owners, High Density Zoning, a massive pie shaped lot & boasting over 1,500sqft on the main level the possibilities are endless. The main floor family room is spacious w/ large windows adding tones of natural light & a tyndall stone fireplace adding a touch of character to the room. All 3 bedrooms plus den are spacious and the primary bedroom offers a 2pc ensuite. The lower level is partially finished with an additional bedroom & tones of space awaiting your final touches. The yard is huge with over 10,000sqft of space, back-alley access & front access to your double detached garage with drive thru doors, ideal for RV parking & storage. The home has been well looked after w/ a newer roof, concrete driveway, some windows & vinyl siding. Excellent location, near restaurants, walking trails & Queen Street Medical Plaza.

Built in 1968

Essential Information

MLS® #	E4460440
Price	\$389,900
Bedrooms	3
Bathrooms	1.50



Full Baths	1
Half Baths	1
Square Footage	1,525
Acres	0.00
Year Built	1968
Type	Single Family
Sub-Type	Detached Single Family
Style	Bungalow
Status	Active

Community Information

Address	107 Andrews Crescent
Area	Spruce Grove
Subdivision	City Centre
City	Spruce Grove
County	ALBERTA
Province	AB
Postal Code	T7X 2K4

Amenities

Amenities	See Remarks
Parking	Double Garage Detached

Interior

Interior Features	ensuite bathroom
Appliances	Dishwasher-Built-In, Freezer, Garage Control, Garage Opener, Stove-Electric, Window Coverings, Refrigerators-Two
Heating	Forced Air-1, Natural Gas
Fireplace	Yes
Fireplaces	Mantel
Stories	1
Has Basement	Yes
Basement	Full, Partially Finished

Exterior

Exterior	Wood, Brick, Vinyl
Exterior Features	Back Lane, Fenced, Landscaped, Playground Nearby, Schools, Shopping Nearby, See Remarks
Roof	Asphalt Shingles

Construction Wood, Brick, Vinyl
Foundation Concrete Perimeter

Additional Information

Date Listed October 2nd, 2025
Days on Market 6
Zoning Zone 91

DATA IS DEEMED RELIABLE BUT IS NOT GUARANTEED ACCURATE BY THE REALTORS® ASSOCIATION OF EDMONTON. COPYRIGHT 2025 BY THE REALTORS® ASSOCIATION OF EDMONTON. ALL RIGHTS RESERVED. Trademarks are owned or controlled by the Canadian Real Estate Association (CREA) and identify real estate professionals who are members of CREA (REALTOR®, REALTORS®) and/or the quality of services they provide (MLS®, Multiple Listing Service®)

Listing information last updated on October 8th, 2025 at 5:47pm MDT