

\$78,900 - 611 12831 66 Street, Edmonton

MLS® #E4459273

\$78,900

1 Bedroom, 1.00 Bathroom, 523 sqft
Condo / Townhouse on 0.00 Acres

Belvedere, Edmonton, AB

This one bedroom condo is located on the 6th floor of a very secure building. Features a large living room and bedroom. Parking and laundry are also available. This condo is well managed and perfectly located near to public transportation, shopping and countless other amenities. This is a great investment or home for a first time buyer.

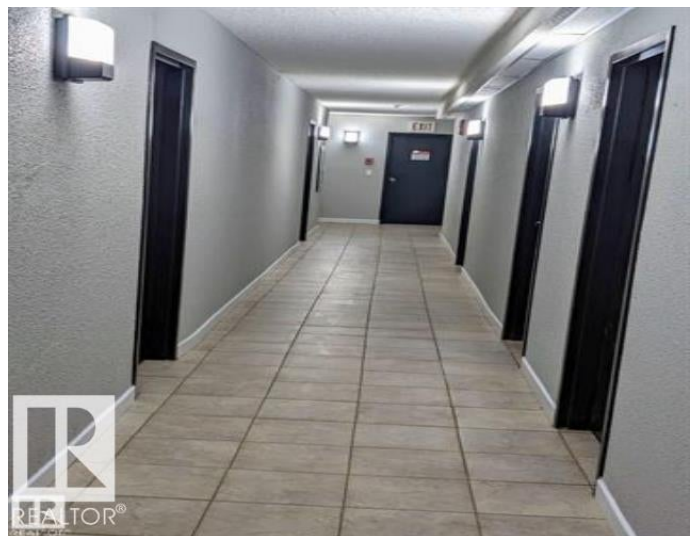
Built in 1983

Essential Information

MLS® #	E4459273
Price	\$78,900
Bedrooms	1
Bathrooms	1.00
Full Baths	1
Square Footage	523
Acres	0.00
Year Built	1983
Type	Condo / Townhouse
Sub-Type	Apartment High Rise
Style	Single Level Apartment
Status	Active

Community Information

Address	611 12831 66 Street
Area	Edmonton



Subdivision	Belvedere
City	Edmonton
County	ALBERTA
Province	AB
Postal Code	T5C 0A4

Amenities

Amenities	Deck, Parking-Extra, Parking-Visitor
Parking	Heated, Parkade, Stall

Interior

Appliances	Hood Fan, Microwave Hood Fan, Refrigerator, Stove-Electric, Microwave Hood Fan-Two
Heating	Forced Air-1, Natural Gas
# of Stories	8
Stories	8
Has Basement	Yes
Basement	None, No Basement

Exterior

Exterior	Concrete
Exterior Features	Commercial, Schools
Roof	Flat
Construction	Concrete
Foundation	Concrete Perimeter

Additional Information

Date Listed	September 24th, 2025
Days on Market	35
Zoning	Zone 02
Condo Fee	\$374

DATA IS DEEMED RELIABLE BUT IS NOT GUARANTEED ACCURATE BY THE REALTORS® ASSOCIATION OF EDMONTON. COPYRIGHT 2025 BY THE REALTORS® ASSOCIATION OF EDMONTON. ALL RIGHTS RESERVED. Trademarks are owned or controlled by the Canadian Real Estate Association (CREA) and identify real estate professionals who are members of CREA (REALTOR®, REALTORS®) and/or the quality of services they provide (MLS®, Multiple Listing Service®)

Listing information last updated on October 29th, 2025 at 8:02am MDT