

Courtesy Of Kali K Thompson Of Exp Realty

\$635,000 - 14 50529 Rge Road 21, Rural Parkland County

MLS® #E4455528

\$635,000

5 Bedroom, 2.50 Bathroom, 1,553 sqft

Rural on 1.00 Acres

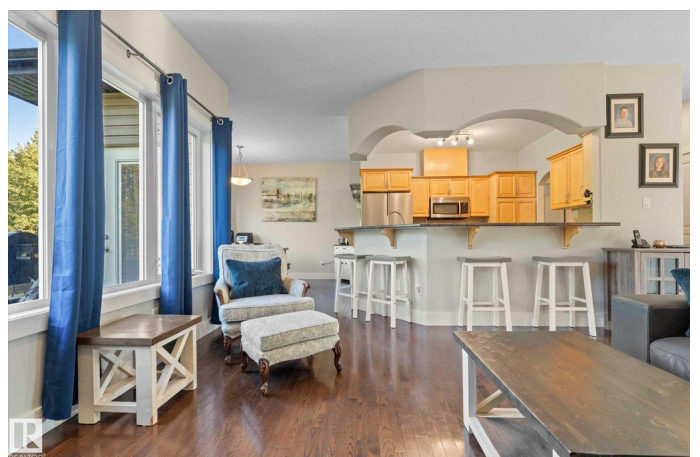
Twin Ravines, Rural Parkland County, AB

Welcome to peaceful country living in Twin Ravines! This beautiful 2008 hillside walkout bungalow sits on 1 acre, just 20 minutes from Stony Plain. With 1,539 sq ft on the main floor, it features hardwood and tile flooring, soaring 9'™ ceilings, and convenient main floor laundry. The bright maple kitchen offers plenty of cabinets, a raised eating bar, and flows into the dining area with access to the deck—perfect for BBQs with the natural gas hookup. The cozy living room with its corner fireplace is ideal for family gatherings. With 5 bedrooms and 2.5 baths, there's™ room for everyone. The primary suite includes a walk-in closet and spa-like ensuite with Jacuzzi tub and separate shower. The finished walkout basement offers a spacious family room, hobby room, and high-efficiency furnace. Outside, enjoy the landscaped yard with firepit, and insulated/drywalled, heated triple garage. A perfect blend of comfort, space, and country charm—welcome home!

Built in 2008

Essential Information

MLS® #	E4455528
Price	\$635,000
Bedrooms	5



Bathrooms	2.50
Full Baths	2
Half Baths	1
Square Footage	1,553
Acres	1.00
Year Built	2008
Type	Rural
Sub-Type	Detached Single Family
Style	Bungalow
Status	Active

Community Information

Address	14 50529 Rge Road 21
Area	Rural Parkland County
Subdivision	Twin Ravines
City	Rural Parkland County
County	ALBERTA
Province	AB
Postal Code	T7Z 1X5

Amenities

Features	Ceiling 9 ft., Closet Organizers, Deck, Detectors Smoke, Fire Pit, No Smoking Home, Walkout Basement
----------	--

Interior

Interior Features	ensuite bathroom
Heating	Forced Air-1, Natural Gas
Fireplace	Yes
Stories	2
Has Basement	Yes
Basement	Full, Finished

Exterior

Exterior	Wood
Exterior Features	Backs Onto Park/Trees, Cul-De-Sac, Landscaped, Private Setting
Construction	Wood
Foundation	Concrete Perimeter

Additional Information

Date Listed August 31st, 2025

Days on Market 2

Zoning Zone 90

DATA IS DEEMED RELIABLE BUT IS NOT GUARANTEED ACCURATE BY THE REALTORS® ASSOCIATION OF EDMONTON. COPYRIGHT 2025 BY THE REALTORS® ASSOCIATION OF EDMONTON. ALL RIGHTS RESERVED. Trademarks are owned or controlled by the Canadian Real Estate Association (CREA) and identify real estate professionals who are members of CREA (REALTOR®, REALTORS®) and/or the quality of services they provide (MLS®, Multiple Listing Service®)

Listing information last updated on September 2nd, 2025 at 8:17pm MDT