

Courtesy Of Jennifer Francisco Of Real Broker

\$160,000 - 15 14205 82 Street, Edmonton

MLS® #E4455490

\$160,000

3 Bedroom, 1.00 Bathroom, 883 sqft
Condo / Townhouse on 0.00 Acres

Kildare, Edmonton, AB

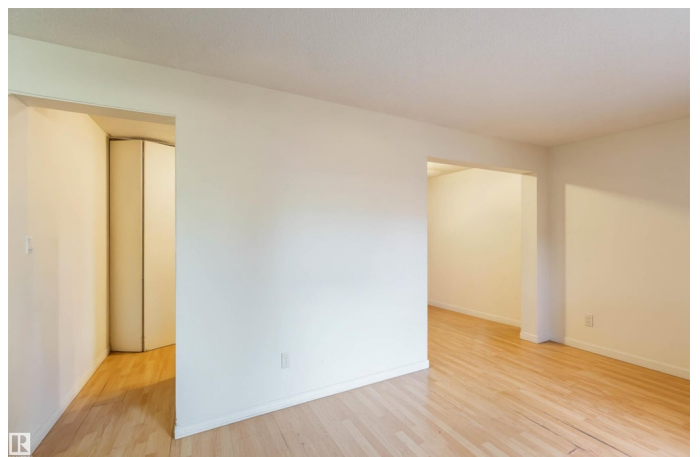
INVESTOR ALERT! This well-maintained home offers a bright and spacious layout with an open living area, functional kitchen, and comfortable bedrooms. Originally configured with three bedrooms, the layout can easily be converted back to suit your needs. Conveniently located close to Londonderry Mall, Northgate, schools, parks, downtown, and a variety of amenities, this property combines comfort and convenience in a prime location. Don't miss this opportunity!

Built in 1971

Essential Information

MLS® #	E4455490
Price	\$160,000
Bedrooms	3
Bathrooms	1.00
Full Baths	1
Square Footage	883
Acres	0.00
Year Built	1971
Type	Condo / Townhouse
Sub-Type	Townhouse
Style	2 Storey
Status	Active

Community Information



Address	15 14205 82 Street
Area	Edmonton
Subdivision	Kildare
City	Edmonton
County	ALBERTA
Province	AB
Postal Code	T5E 2V7

Amenities

Amenities	Closet Organizers, Deck, Detectors Smoke, No Smoking Home, Vinyl Windows
Parking	Stall

Interior

Appliances	Dryer, Hood Fan, Refrigerator, Stove-Electric, Washer
Heating	Forced Air-1, Natural Gas
Stories	2
Has Basement	Yes
Basement	Full, Finished

Exterior

Exterior	Wood, Stucco
Exterior Features	Fenced, Playground Nearby, Schools, Shopping Nearby
Roof	Asphalt Shingles
Construction	Wood, Stucco
Foundation	Concrete Perimeter

Additional Information

Date Listed	August 30th, 2025
Days on Market	60
Zoning	Zone 02
Condo Fee	\$501

DATA IS DEEMED RELIABLE BUT IS NOT GUARANTEED ACCURATE BY THE REALTORS® ASSOCIATION OF EDMONTON. COPYRIGHT 2025 BY THE REALTORS® ASSOCIATION OF EDMONTON. ALL RIGHTS RESERVED. Trademarks are owned or controlled by the Canadian Real Estate Association (CREA) and identify real estate professionals who are members of CREA (REALTOR®, REALTORS®) and/or the quality of services they provide (MLS®, Multiple Listing Service®)

Listing information last updated on October 29th, 2025 at 8:02am MDT