

\$534,900 - 1931 160 Street, Edmonton

MLS® #E4454239

\$534,900

3 Bedroom, 2.50 Bathroom, 1,730 sqft
Single Family on 0.00 Acres

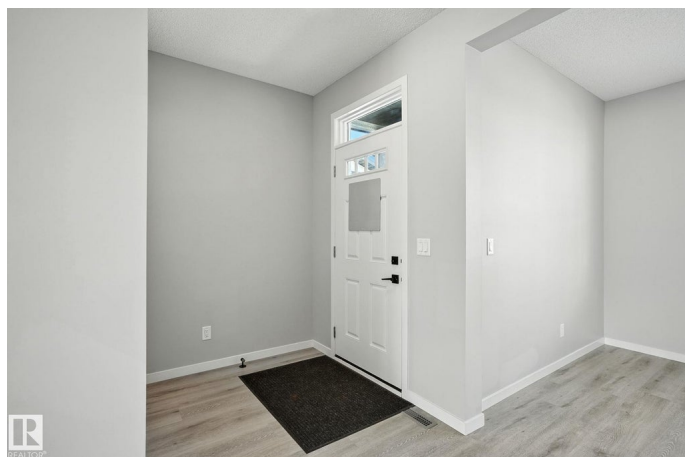
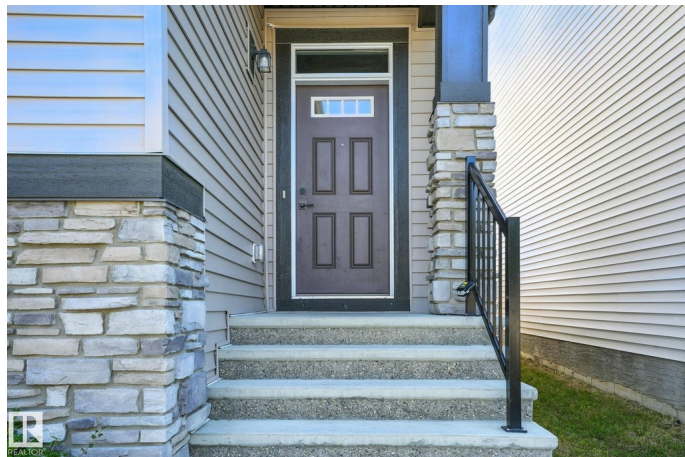
Glenridding Ravine, Edmonton, AB

Welcome to this beautifully designed 1,730 sq. ft. 2-storey in Glenridding Ravine, built in 2022 and complete with a double detached garage. This modern home features 3 bedrooms, 2.5 baths, and stylish finishes throughout. The main floor includes a versatile den that can be used as a bedroom or office, along with a convenient back entry complete with bench and hooks for added functionality. Upstairs, youâ€™ll find a bonus room â€“ perfect for a family room, playroom, or media space, â€“ plus the convenience of second-level laundry. Designed with a separate side entrance, second furnace, and rough-in for a secondary suite, this home is set up for income potential, making it an excellent choice for first-time buyers or savvy investors. Ideally located near shopping, schools, parks, and the bus system, this property truly combines comfort, opportunity, and lifestyle.

Built in 2022

Essential Information

MLS® #	E4454239
Price	\$534,900
Bedrooms	3
Bathrooms	2.50
Full Baths	2
Half Baths	1



Square Footage	1,730
Acres	0.00
Year Built	2022
Type	Single Family
Sub-Type	Detached Single Family
Style	2 Storey
Status	Active

Community Information

Address	1931 160 Street
Area	Edmonton
Subdivision	Glenridding Ravine
City	Edmonton
County	ALBERTA
Province	AB
Postal Code	T6W 4X6

Amenities

Amenities	Vinyl Windows, See Remarks
Parking	Double Garage Detached

Interior

Interior Features	ensuite bathroom
Appliances	Dishwasher-Built-In, Dryer, Garage Control, Garage Opener, Microwave Hood Fan, Refrigerator, Stove-Electric, Washer
Heating	Forced Air-2, Natural Gas
Stories	2
Has Basement	Yes
Basement	Full, See Remarks

Exterior

Exterior	Wood, Stone, Vinyl
Exterior Features	Back Lane, Fenced, Landscaped, Playground Nearby, Schools, Shopping Nearby
Roof	Asphalt Shingles
Construction	Wood, Stone, Vinyl
Foundation	Concrete Perimeter

Additional Information

Date Listed August 21st, 2025

Days on Market 12

Zoning Zone 56

DATA IS DEEMED RELIABLE BUT IS NOT GUARANTEED ACCURATE BY THE REALTORS® ASSOCIATION OF EDMONTON. COPYRIGHT 2025 BY THE REALTORS® ASSOCIATION OF EDMONTON. ALL RIGHTS RESERVED. Trademarks are owned or controlled by the Canadian Real Estate Association (CREA) and identify real estate professionals who are members of CREA (REALTOR®, REALTORS®) and/or the quality of services they provide (MLS®, Multiple Listing Service®)

Listing information last updated on September 2nd, 2025 at 9:31am MDT