

\$669,900 - 928 Blackmud Creek Crescent, Edmonton

MLS® #E4453476

\$669,900

5 Bedroom, 3.00 Bathroom, 1,414 sqft

Single Family on 0.00 Acres

Blackmud Creek, Edmonton, AB

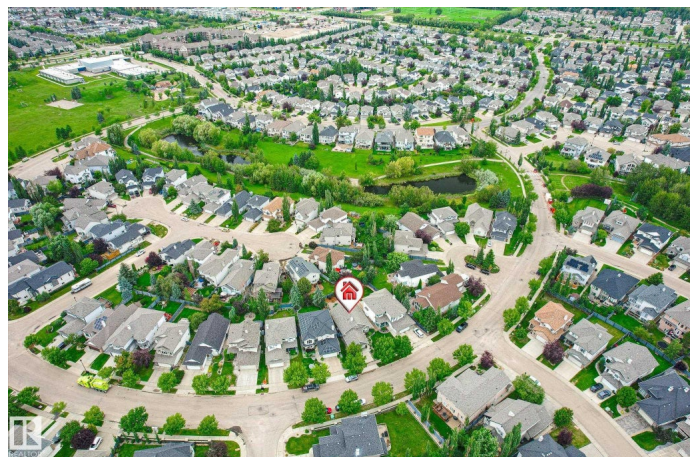
Step into this stunningly maintained executive bungalow and instantly feel at home. Pride of ownership bursts from every corner! Vaulted ceilings and an open floor plan with over 2,700 sq ft of finished living area (including basement) and 5 bedrooms create a bright, welcoming space, while the kitchen—with its island, corner pantry, and stainless steel appliances—invites family gatherings and easy entertaining. Cozy up by one of two gas fireplaces, enjoy the comfort of central A/C, or relax knowing major updates like a new furnace, tankless hot water, and water softener are already in place. The gorgeous backyard is designed for low-maintenance living, featuring a large composite deck perfect for summer evenings and BBQ's with natural gas line. With its durable vinyl and stone exterior, this home has been meticulously cared for inside and out. Best of all, you're just steps from ravine, walking trails, an off-leash park, and every amenity—making it the perfect blend of comfort, convenience, and charm.

Built in 2002

Essential Information

MLS® # E4453476

Price \$669,900



Bedrooms	5
Bathrooms	3.00
Full Baths	3
Square Footage	1,414
Acres	0.00
Year Built	2002
Type	Single Family
Sub-Type	Detached Single Family
Style	Bungalow
Status	Active

Community Information

Address	928 Blackmud Creek Crescent
Area	Edmonton
Subdivision	Blackmud Creek
City	Edmonton
County	ALBERTA
Province	AB
Postal Code	T6W 1J2

Amenities

Amenities	Air Conditioner, Deck, See Remarks
Parking Spaces	4
Parking	Double Garage Attached

Interior

Interior Features	ensuite bathroom
Appliances	Alarm/Security System, Dishwasher-Built-In, Dryer, Microwave Hood Fan, Refrigerator, Stove-Electric, Vacuum System Attachments, Washer, Window Coverings, TV Wall Mount
Heating	Forced Air-1, Natural Gas
Stories	2
Has Basement	Yes
Basement	Full, Finished

Exterior

Exterior	Wood, Stone, Vinyl
Exterior Features	Airport Nearby, Fenced, Flat Site, Fruit Trees/Shrubs, Golf Nearby, Landscaped, Low Maintenance Landscape, Schools, Shopping Nearby,

	See Remarks
Roof	Asphalt Shingles
Construction	Wood, Stone, Vinyl
Foundation	Concrete Perimeter

Additional Information

Date Listed	August 17th, 2025
Days on Market	1
Zoning	Zone 55

DATA IS DEEMED RELIABLE BUT IS NOT GUARANTEED ACCURATE BY THE REALTORS® ASSOCIATION OF EDMONTON. COPYRIGHT 2025 BY THE REALTORS® ASSOCIATION OF EDMONTON. ALL RIGHTS RESERVED. Trademarks are owned or controlled by the Canadian Real Estate Association (CREA) and identify real estate professionals who are members of CREA (REALTOR®, REALTORS®) and/or the quality of services they provide (MLS®, Multiple Listing Service®)

Listing information last updated on August 18th, 2025 at 4:47pm MDT