

\$359,900 - 60 600 Bellerose Drive, St. Albert

MLS® #E4449296

\$359,900

2 Bedroom, 1.50 Bathroom, 1,036 sqft

Condo / Townhouse on 0.00 Acres

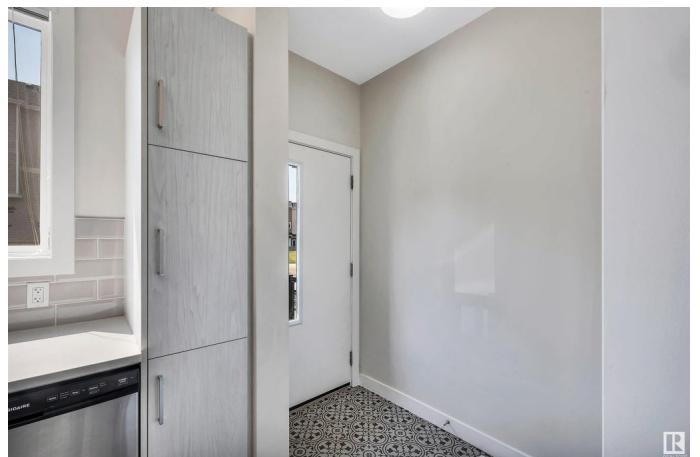
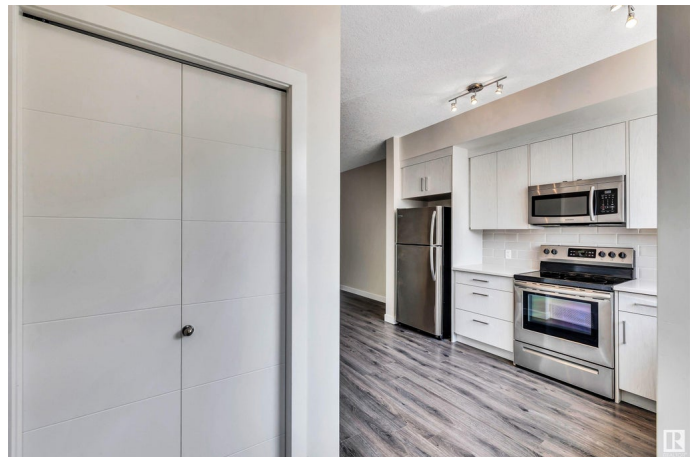
Oakmont, St. Albert, AB

Affordable living in beautiful St. Albert! This Oakmont Townhome is sure to impress. Backs on to trees and is perfect for first time buyers, downsizers or travelers who like to lock up and leave. The main floor is open concept has a spacious kitchen with lots of cabinetry, QUARTZ Counter Tops, Glass Tile Back splash & Stainless Steele appliances. The dining nook is next to the kitchen so it's perfect for entertaining. The Living Area offers the tranquility of the peaceful setting with access to the deck. The deck comes with GAS BBQ hookup. Upstairs you will find a Massive primary Bedroom with double closets & Second Spacious bedroom that have access to a Large 4 pc Bathroom. Upstairs laundry completes this level. The unspoiled basement can be developed in to another large rec room or additional bedroom area. This home is complete with 2 Titled parking stalls and window coverings.

Built in 2019

Essential Information

MLS® #	E4449296
Price	\$359,900
Bedrooms	2
Bathrooms	1.50
Full Baths	1



Half Baths	1
Square Footage	1,036
Acres	0.00
Year Built	2019
Type	Condo / Townhouse
Sub-Type	Townhouse
Style	2 Storey
Status	Active

Community Information

Address	60 600 Bellerose Drive
Area	St. Albert
Subdivision	Oakmont
City	St. Albert
County	ALBERTA
Province	AB
Postal Code	T8N 7T5

Amenities

Amenities	Deck, Detectors Smoke, No Smoking Home, Parking-Visitor
Parking Spaces	2
Parking	2 Outdoor Stalls

Interior

Appliances	Dishwasher-Built-In, Dryer, Microwave Hood Fan, Refrigerator, Stove-Electric, Washer, Window Coverings
Heating	Forced Air-1, Natural Gas
Stories	2
Has Basement	Yes
Basement	Full, Unfinished

Exterior

Exterior	Wood, Vinyl
Exterior Features	Environmental Reserve, Fenced, Golf Nearby, Landscaped, Low Maintenance Landscape, Park/Reserve, Playground Nearby, Public Swimming Pool, Public Transportation, Ravine View, Schools, Shopping Nearby
Roof	Asphalt Shingles
Construction	Wood, Vinyl

Foundation Concrete Perimeter

Additional Information

Date Listed July 23rd, 2025
Days on Market 4
Zoning Zone 24
Condo Fee \$236

DATA IS DEEMED RELIABLE BUT IS NOT GUARANTEED ACCURATE BY THE REALTORS® ASSOCIATION OF EDMONTON. COPYRIGHT 2025 BY THE REALTORS® ASSOCIATION OF EDMONTON. ALL RIGHTS RESERVED.Trademarks are owned or controlled by the Canadian Real Estate Association (CREA) and identify real estate professionals who are members of CREA (REALTOR®, REALTORS®) and/or the quality of services they provide (MLS®, Multiple Listing Service®)
Listing information last updated on July 27th, 2025 at 5:47am MDT