

# **\$975,000 - 90 52304 Rge Road 233, Rural Strathcona County**

MLS® #E4448159

**\$975,000**

3 Bedroom, 3.00 Bathroom, 2,132 sqft

Rural on 0.33 Acres

Fountain Creek Estates, Rural Strathcona County, AB

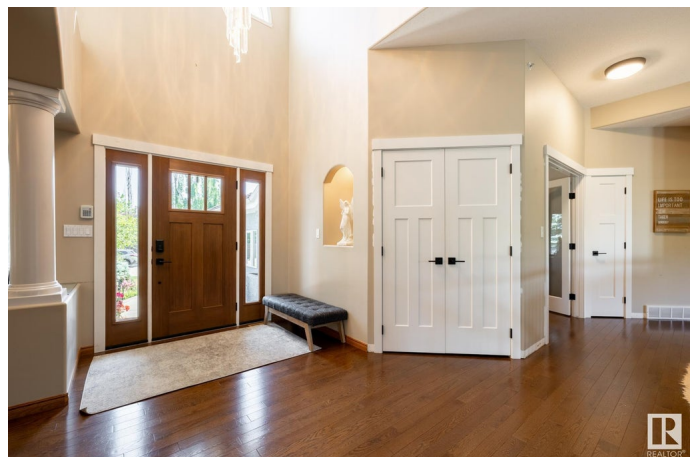
This gorgeous property offers privacy and amazing views with a wall of windows looking out onto your private backyard. This home has spacious Primary Bdrm w/ generous walk in closet and reno'd 5 pce.ensuite. Main floor den, bathroom and laundry/mud room are close at hand and recently renovated. Family sized eating area in kitchen with lots of counter space and storage with seating at the island. 2 sided fireplace and New electric fireplace and stone surround. Also on the main floor is the elegant dining and living room area. The lower level offers lots of room for entertaining and lounging with tons of storage. 2 additional bedrooms with plenty of closet space and a full 4pc bath. Triple car tandem garage - you can fit 5 cars in this garage, large enough for your truck! Hot water heated floors and hot and cold running water make this garage a dream. Upgrades on main level are;bathrooms,laundry,doors, A/C, awning, unfinished railings,electric fireplace, & front door, and so much more!!

Built in 1996

## **Essential Information**

MLS® #

E4448159



Price	\$975,000
Bedrooms	3
Bathrooms	3.00
Full Baths	3
Square Footage	2,132
Acres	0.33
Year Built	1996
Type	Rural
Sub-Type	Detached Single Family
Style	Bungalow
Status	Active

### Community Information

Address	90 52304 Rge Road 233
Area	Rural Strathcona County
Subdivision	Fountain Creek Estates
City	Rural Strathcona County
County	ALBERTA
Province	AB
Postal Code	T8B 1C9

### Amenities

Features	Air Conditioner, Closet Organizers, Deck, Hot Water Natural Gas, No Smoking Home, Patio, Sprinkler System-Fire, Vaulted Ceiling, Vinyl Windows, Natural Gas BBQ Hookup
Parking Spaces	7

### Interior

Interior Features	ensuite bathroom
Heating	Forced Air-1, In Floor Heat System, Natural Gas
Fireplace	Yes
Stories	2
Has Basement	Yes
Basement	Full, Finished

### Exterior

Exterior	Wood
Exterior Features	Backs Onto Park/Trees, Fenced, Landscaped, Playground Nearby, Private Setting, Shopping Nearby

Construction	Wood
Foundation	Concrete Perimeter

**Additional Information**

Date Listed	July 16th, 2025
Days on Market	3
Zoning	Zone 80

DATA IS DEEMED RELIABLE BUT IS NOT GUARANTEED ACCURATE BY THE REALTORS® ASSOCIATION OF EDMONTON. COPYRIGHT 2025 BY THE REALTORS® ASSOCIATION OF EDMONTON. ALL RIGHTS RESERVED.Trademarks are owned or controlled by the Canadian Real Estate Association (CREA) and identify real estate professionals who are members of CREA (REALTOR®, REALTORS®) and/or the quality of services they provide (MLS®, Multiple Listing Service®)

Listing information last updated on July 19th, 2025 at 5:02pm MDT