

\$219,000 - 40 53024 Rge Rd 15, Rural Parkland County

MLS® #E4448138

\$219,000

0 Bedroom, 0.00 Bathroom,
Rural on 1.99 Acres

Wilderness Heights, Rural Parkland County,
AB

Wilderness heights

Essential Information

| | |
|-----------|-----------------|
| MLS® # | E4448138 |
| Price | \$219,000 |
| Bathrooms | 0.00 |
| Acres | 1.99 |
| Type | Rural |
| Sub-Type | Vacant Lot/Land |
| Status | Active |

Community Information

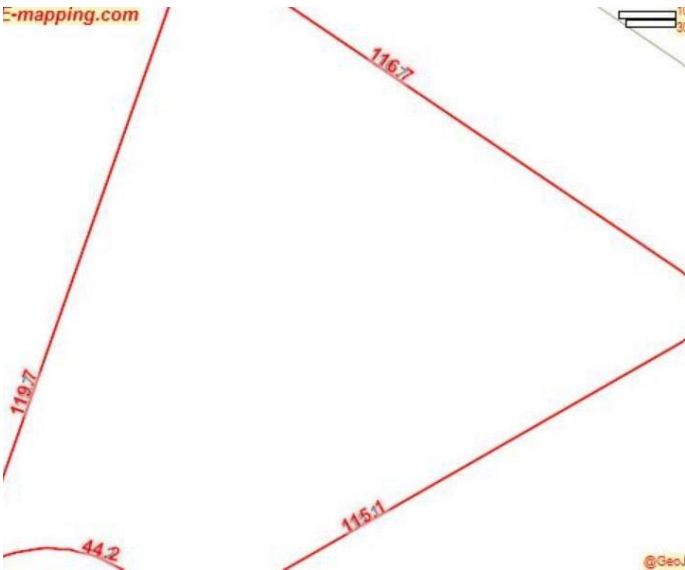
| | |
|-------------|-----------------------|
| Address | 40 53024 Rge Rd 15 |
| Area | Rural Parkland County |
| Subdivision | Wilderness Heights |
| City | Rural Parkland County |
| County | ALBERTA |
| Province | AB |
| Postal Code | T7Y 2T4 |

Exterior

| | |
|-------------------|--|
| Exterior Features | Cul-De-Sac, Fruit Trees/Shrubs, Rolling Land |
| Lot Description | 116.7X119.7 |

Additional Information

| | |
|-------------|-----------------|
| Date Listed | July 16th, 2025 |
|-------------|-----------------|



| | |
|----------------|---------|
| Days on Market | 52 |
| Zoning | Zone 90 |

DATA IS DEEMED RELIABLE BUT IS NOT GUARANTEED ACCURATE BY THE REALTORS® ASSOCIATION OF EDMONTON. COPYRIGHT 2025 BY THE REALTORS® ASSOCIATION OF EDMONTON. ALL RIGHTS RESERVED. Trademarks are owned or controlled by the Canadian Real Estate Association (CREA) and identify real estate professionals who are members of CREA (REALTOR®, REALTORS®) and/or the quality of services they provide (MLS®, Multiple Listing Service®)

Listing information last updated on September 6th, 2025 at 8:32am MDT