

\$189,500 - 102 12111 51 Avenue, Edmonton

MLS® #E4447902

\$189,500

1 Bedroom, 1.00 Bathroom, 687 sqft

Condo / Townhouse on 0.00 Acres

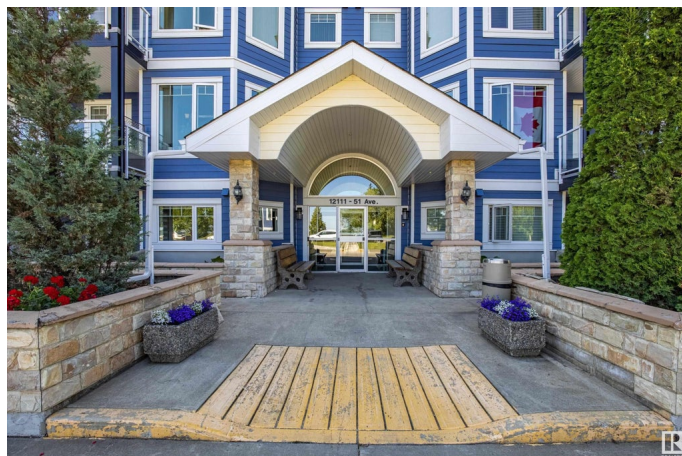
Malmo Plains, Edmonton, AB

Well cared for 1 bedroom unit located in southsides Malmo Plains. Open Layout. Kitchen features white colonial cupboards and a center island overlooking the living room area. Carpet and Lino flooring are in good condition. Spacious bedroom with closet. Four Piece Bathroom and In suite laundry. Close to public transportation and shopping. This 18+ building is extremely well maintained and well run. Sorry no pets. Underground titled parking stall and car wash bay. Guest Suite available for rent. Condo fees are \$345 and include heat, water, sewer, reserve fund contributions, insurance and professional management. Priced well .

Built in 2004

Essential Information

MLS® #	E4447902
Price	\$189,500
Bedrooms	1
Bathrooms	1.00
Full Baths	1
Square Footage	687
Acres	0.00
Year Built	2004
Type	Condo / Townhouse
Sub-Type	Lowrise Apartment



Style	Single Level Apartment
Status	Active

Community Information

Address	102 12111 51 Avenue
Area	Edmonton
Subdivision	Malmo Plains
City	Edmonton
County	ALBERTA
Province	AB
Postal Code	T6H 6A3

Amenities

Amenities	Air Conditioner, Guest Suite, No Animal Home, No Smoking Home, Parking-Visitor, Social Rooms, Vinyl Windows, Workshop, Storage Cage
Parking	Underground

Interior

Appliances	Dishwasher-Built-In, Dryer, Refrigerator, Stove-Electric, Washer, Window Coverings
Heating	In Floor Heat System, Natural Gas
# of Stories	5
Stories	1
Has Basement	Yes
Basement	None, No Basement

Exterior

Exterior	Wood, Stucco
Exterior Features	Landscaped, Public Transportation
Roof	Asphalt Shingles
Construction	Wood, Stucco
Foundation	Concrete Perimeter

Additional Information

Date Listed	July 15th, 2025
Days on Market	57
Zoning	Zone 15
Condo Fee	\$345

DATA IS DEEMED RELIABLE BUT IS NOT GUARANTEED ACCURATE BY THE REALTORS® ASSOCIATION OF EDMONTON. COPYRIGHT 2025 BY THE REALTORS® ASSOCIATION OF EDMONTON. ALL RIGHTS

RESERVED.Trademarks are owned or controlled by the Canadian Real Estate Association (CREA) and identify real estate professionals who are members of CREA (REALTOR®, REALTORS®) and/or the quality of services they provide (MLS®, Multiple Listing Service®)

Listing information last updated on September 10th, 2025 at 9:02am MDT