

# **\$399,900 - 4307 Terwillegar Link Link, Edmonton**

MLS® #E4447735

**\$399,900**

3 Bedroom, 3.50 Bathroom, 1,352 sqft

Single Family on 0.00 Acres

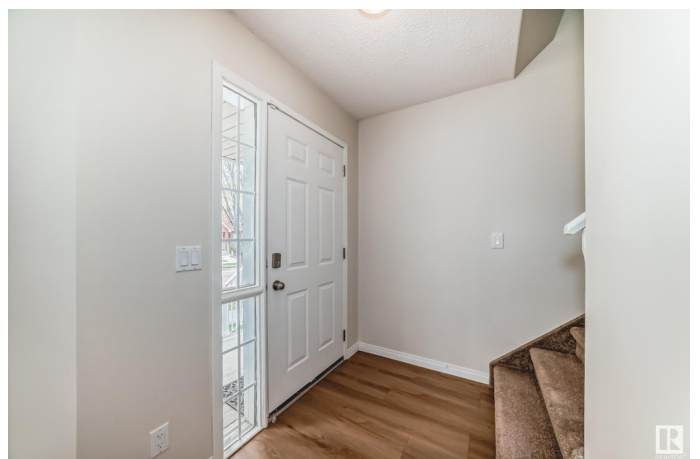
Terwillegar Towne, Edmonton, AB

No condo fee end unit Townhome in Terwillegar Towne! Absolutely great value-ideal as a starter home or investment property. New luxury vinyl plank flooring and fresh paint ensure a move-in-ready experience. This spacious 3-bedroom plus den, 3.5-bath home features a bright main floor with a cozy gas fireplace, kitchen with raised eating bar and dedicated hoodfan. Upstairs you'll find three comfortable bedrooms, including a huge primary suite with full ensuite bath. The fully finished basement adds versatility with a large rec room, an additional full bathroom, and a den that can function as a fourth bedroom or home office. A major highlight is the double detached garage with insulated walls, heater, and a dedicated sub-panel, making it perfect for a workshop or future EV charging setup. Newly improved back and side yard with a huge deck guarantee enjoyable outdoor living for the rest of the summer!

Built in 2002

## **Essential Information**

MLS® #	E4447735
Price	\$399,900
Bedrooms	3
Bathrooms	3.50



Full Baths	3
Half Baths	1
Square Footage	1,352
Acres	0.00
Year Built	2002
Type	Single Family
Sub-Type	Residential Attached
Style	2 Storey
Status	Active

### Community Information

Address	4307 Terwillegar Link <a href="#">Link</a>
Area	Edmonton
Subdivision	Terwillegar Towne
City	Edmonton
County	ALBERTA
Province	AB
Postal Code	T6R 3H6

### Amenities

Amenities	Carbon Monoxide Detectors, Deck, Detectors Smoke, Hot Water Natural Gas, Vaulted Ceiling
Parking	Double Garage Detached

### Interior

Interior Features	ensuite bathroom
Appliances	Dishwasher-Built-In, Dryer, Garage Control, Garage Opener, Hood Fan, Refrigerator, Storage Shed, Stove-Electric, Washer, Garage Heater
Heating	Forced Air-1, Natural Gas
Fireplace	Yes
Fireplaces	Corner, Glass Door, Tile Surround
Stories	3
Has Basement	Yes
Basement	Full, Finished

### Exterior

Exterior	Wood, Brick, Vinyl
Exterior Features	Fenced, Landscaped, Park/Reserve, Playground Nearby, Public Transportation, Schools, Shopping Nearby

Roof	Asphalt Shingles
Construction	Wood, Brick, Vinyl
Foundation	Concrete Perimeter

**Additional Information**

Date Listed	July 14th, 2025
Days on Market	4
Zoning	Zone 14
HOA Fees	138
HOA Fees Freq.	Annually

DATA IS DEEMED RELIABLE BUT IS NOT GUARANTEED ACCURATE BY THE REALTORS® ASSOCIATION OF EDMONTON. COPYRIGHT 2025 BY THE REALTORS® ASSOCIATION OF EDMONTON. ALL RIGHTS RESERVED.Trademarks are owned or controlled by the Canadian Real Estate Association (CREA) and identify real estate professionals who are members of CREA (REALTOR®, REALTORS®) and/or the quality of services they provide (MLS®, Multiple Listing Service®)

Listing information last updated on July 18th, 2025 at 4:02am MDT