

Courtesy Of Brandon M Lai Of RE/MAX Elite

\$724,900 - 631 Adams Way, Edmonton

MLS® #E4447448

\$724,900

4 Bedroom, 3.50 Bathroom, 2,331 sqft

Single Family on 0.00 Acres

Ambleside, Edmonton, AB

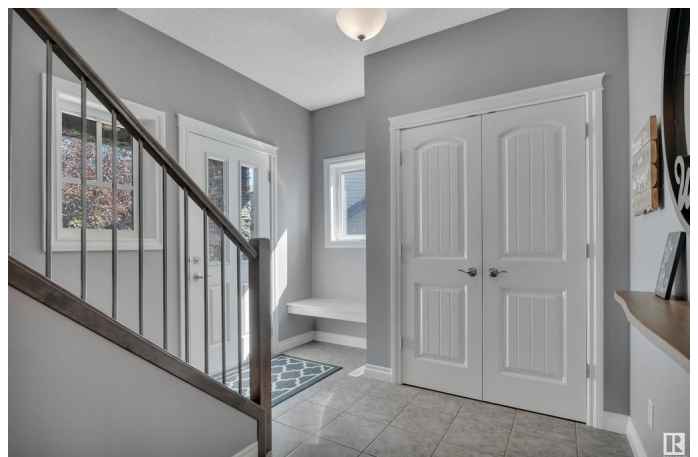
IMMACULATE condition ~2300sqft PLUS a professionally FULLY FINISHED basement sitting on a LARGE PIE LOT on a quiet street in Ambleside! 4 BEDROOMS & OFFICE, 3.5 baths, Central AC, 9ft ceilings, IRRIGATION system, beautifully landscaped SOUTH backyard all METICULOUSLY well-maintained! Main floor features beautiful HARDWOOD flooring, 9ft ceilings throughout, a huge kitchen w/ TONS of cabinet & counter space, SS appliances, corner pantry and a center island. Open concept layout has the kitchen open to the dining space & living room has a GAS fireplace and is all facing the SOUTH backyard which brings in plenty of natural light. Office/DEN, 2pc bath also on the main floor. Upstairs is a MASSIVE bonus room w/ 10ft ceilings & surrounded by windows. Primary bedroom is a large space w/ double closets & a spacious getaway ensuite. 2 more great-sized bedrooms & 2nd floor laundry room with storage and sink as well! FF basement has another family/rec room, 4th bedroom & another full bath! Incredible OPPORTUNITY!!

Built in 2011

Essential Information

MLS® # E4447448

Price \$724,900



Bedrooms	4
Bathrooms	3.50
Full Baths	3
Half Baths	1
Square Footage	2,331
Acres	0.00
Year Built	2011
Type	Single Family
Sub-Type	Detached Single Family
Style	2 Storey
Status	Active

Community Information

Address	631 Adams Way
Area	Edmonton
Subdivision	Ambleside
City	Edmonton
County	ALBERTA
Province	AB
Postal Code	T6W 0J9

Amenities

Amenities	Air Conditioner, Ceiling 9 ft., Deck, Sprinkler Sys-Underground
Parking	2 Outdoor Stalls, Double Garage Attached

Interior

Interior Features	ensuite bathroom
Appliances	Air Conditioning-Central, Dishwasher-Built-In, Dryer, Refrigerator, Storage Shed, Stove-Electric, Washer, Window Coverings
Heating	Forced Air-1, Natural Gas
Fireplace	Yes
Fireplaces	Insert
Stories	3
Has Basement	Yes
Basement	Full, Finished

Exterior

Exterior	Wood, Stone, Vinyl
Exterior Features	Fenced, Landscaped, Playground Nearby, Public Transportation,

	Schools, Shopping Nearby
Roof	Asphalt Shingles
Construction	Wood, Stone, Vinyl
Foundation	Concrete Perimeter

Additional Information

Date Listed	July 12th, 2025
Days on Market	1
Zoning	Zone 56
HOA Fees	100
HOA Fees Freq.	Monthly

DATA IS DEEMED RELIABLE BUT IS NOT GUARANTEED ACCURATE BY THE REALTORS® ASSOCIATION OF EDMONTON. COPYRIGHT 2025 BY THE REALTORS® ASSOCIATION OF EDMONTON. ALL RIGHTS RESERVED. Trademarks are owned or controlled by the Canadian Real Estate Association (CREA) and identify real estate professionals who are members of CREA (REALTOR®, REALTORS®) and/or the quality of services they provide (MLS®, Multiple Listing Service®)

Listing information last updated on July 13th, 2025 at 2:47pm MDT