

\$365,000 - 72 16335 84 Street, Edmonton

MLS® #E4447434

\$365,000

3 Bedroom, 2.50 Bathroom, 1,488 sqft
Condo / Townhouse on 0.00 Acres

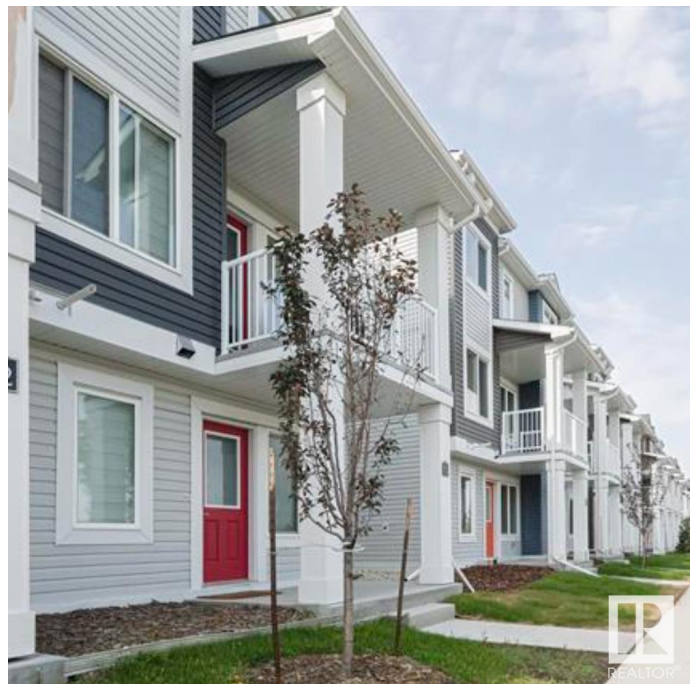
Belle Rive, Edmonton, AB

Beauty in Belle Rive!...This terrific Townhome features 3 Beds, 2.5 Baths, open concept with modern finishes and over 1480sqft. Additional highlights include 2tone kitchen cabinets with under cabinet lighting, peninsula island w/breakfast bar and quartz countertops anchored by stainless steel kitchen appliances. The spacious primary bedroom offers a walk-in closet, a 4 piece ensuite and wall-mounted reading lamps. Adding even more value is the flex space/entrance (makes for a great mudroom), High Efficiency furnace, double attached garage (with roughed-in vacuum system), upstairs laundry, Portable AC, and balcony off the living room. Close proximity to Playground/Spray Park, Schools, Shopping, Restaurants, Public Transit, along with easy access to the Anthony Henday ensures a sound investment...REWARD YOURSELF TODAY!!

Built in 2021

Essential Information

MLS® #	E4447434
Price	\$365,000
Bedrooms	3
Bathrooms	2.50
Full Baths	2
Half Baths	1



Square Footage	1,488
Acres	0.00
Year Built	2021
Type	Condo / Townhouse
Sub-Type	Townhouse
Style	3 Storey
Status	Active

Community Information

Address	72 16335 84 Street
Area	Edmonton
Subdivision	Belle Rive
City	Edmonton
County	ALBERTA
Province	AB
Postal Code	T5Z 0S2

Amenities

Amenities	Parking-Visitor, Vinyl Windows, Vacuum System-Roughed-In
Parking Spaces	2
Parking	Double Garage Attached

Interior

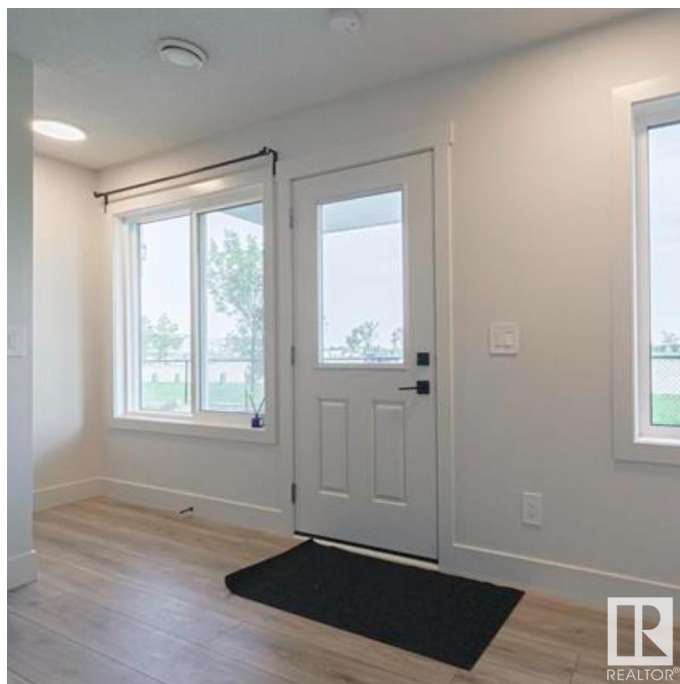
Interior Features	ensuite bathroom
Appliances	Air Conditioner-Window, Dishwasher-Built-In, Dryer, Garage Opener, Microwave Hood Fan, Refrigerator, Stove-Electric, Washer, Window Coverings
Heating	Forced Air-1, Natural Gas
Stories	3
Has Basement	Yes
Basement	None, No Basement

Exterior

Exterior	Wood, Vinyl
Exterior Features	Low Maintenance Landscape, Playground Nearby, Public Transportation, Schools, Shopping Nearby
Roof	Asphalt Shingles
Construction	Wood, Vinyl
Foundation	Concrete Perimeter

Additional Information

Date Listed	July 11th, 2025
Days on Market	2
Zoning	Zone 28
Condo Fee	\$185



DATA IS DEEMED RELIABLE BUT IS NOT GUARANTEED ACCURATE BY THE REALTORS® ASSOCIATION OF EDMONTON. COPYRIGHT 2025 BY THE REALTORS® ASSOCIATION OF EDMONTON. ALL RIGHTS RESERVED. Trademarks are owned or controlled by the Canadian Real Estate Association (CREA) and identify real estate professionals who are members of CREA (REALTOR®, REALTORS®) and/or the quality of services they provide (MLS®, Multiple Listing Service®)

Listing information last updated on July 13th, 2025 at 1:47pm MDT