

\$450,000 - 8127 Orchards Green Green, Edmonton

MLS® #E4446695

\$450,000

3 Bedroom, 2.50 Bathroom, 1,556 sqft

Single Family on 0.00 Acres

The Orchards At Ellerslie, Edmonton, AB

Better than NEW! Immaculate 1556 sq ft, 3-bedroom, 2.5-bath duplex in The Orchards with original owner pride and premium upgrades throughout. The open-concept main floor features a stunning waterfall quartz island with a breakfast bar, perfect for entertaining. A custom feature wall with electric fireplace adds warmth and modern elegance to the living space. Upstairs offers three spacious bedrooms, upper-floor laundry, and a beautiful 4-piece ensuite with a fully tiled shower in the primary retreat. The basement boasts 9 ft ceilings, offering excellent future development potential. Enjoy a large double detached garage (19.5 x 23) , providing ample room for vehicles, storage, or a workshop. Step outside to a beautifully finished low-maintenance landscaped yard, designed for year-round enjoyment with minimal upkeep. Located in a vibrant community with access to walking trails, parks, and exclusive residents-only amenities, this home blends style, comfort, and convenience.

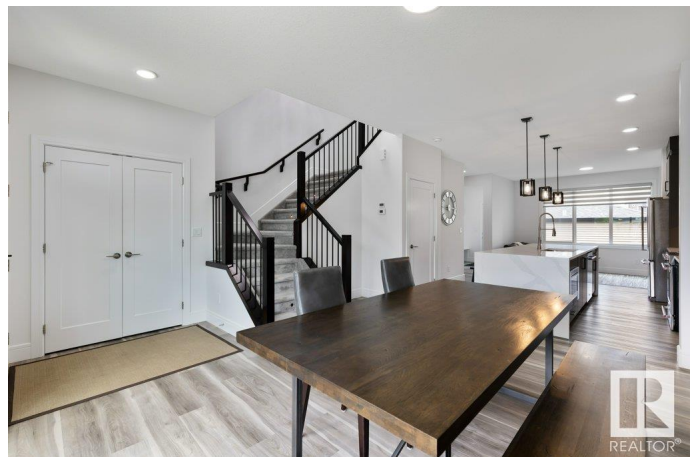
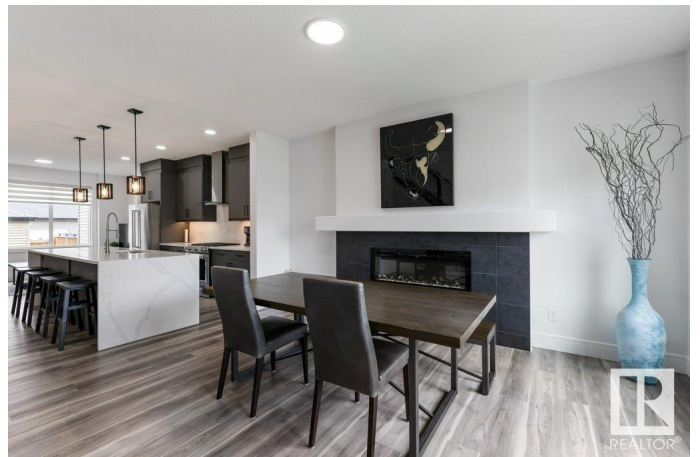
Built in 2020

Essential Information

MLS® # E4446695

Price \$450,000

Bedrooms 3



Bathrooms	2.50
Full Baths	2
Half Baths	1
Square Footage	1,556
Acres	0.00
Year Built	2020
Type	Single Family
Sub-Type	Half Duplex
Style	2 Storey
Status	Active

Community Information

Address	8127 Orchards Green Green
Area	Edmonton
Subdivision	The Orchards At Ellerslie
City	Edmonton
County	ALBERTA
Province	AB
Postal Code	T6X 2N5

Amenities

Amenities	See Remarks
Parking	Double Garage Detached

Interior

Interior Features	ensuite bathroom
Appliances	Dishwasher-Built-In, Dryer, Hood Fan, Oven-Microwave, Refrigerator, Stove-Gas, Washer, Window Coverings
Heating	Forced Air-1, Natural Gas
Fireplace	Yes
Fireplaces	Mantel, Tile Surround
Stories	2
Has Basement	Yes
Basement	Full, Unfinished

Exterior

Exterior	Wood, Stone, Vinyl
Exterior Features	Fenced, Golf Nearby, Landscaped, Playground Nearby, Public Transportation, Schools, Shopping Nearby, See Remarks

Roof	Asphalt Shingles
Construction	Wood, Stone, Vinyl
Foundation	Concrete Perimeter

Additional Information

Date Listed	July 9th, 2025
Days on Market	2
Zoning	Zone 53

DATA IS DEEMED RELIABLE BUT IS NOT GUARANTEED ACCURATE BY THE REALTORS® ASSOCIATION OF EDMONTON. COPYRIGHT 2025 BY THE REALTORS® ASSOCIATION OF EDMONTON. ALL RIGHTS RESERVED.Trademarks are owned or controlled by the Canadian Real Estate Association (CREA) and identify real estate professionals who are members of CREA (REALTOR®, REALTORS®) and/or the quality of services they provide (MLS®, Multiple Listing Service®)

Listing information last updated on July 11th, 2025 at 1:47pm MDT