

# \$379,000 - 22 25515 Twp Road 511 A, Rural Parkland County

MLS® #E4446401

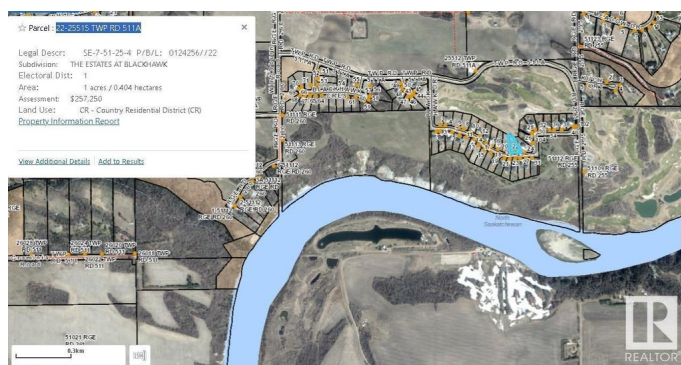
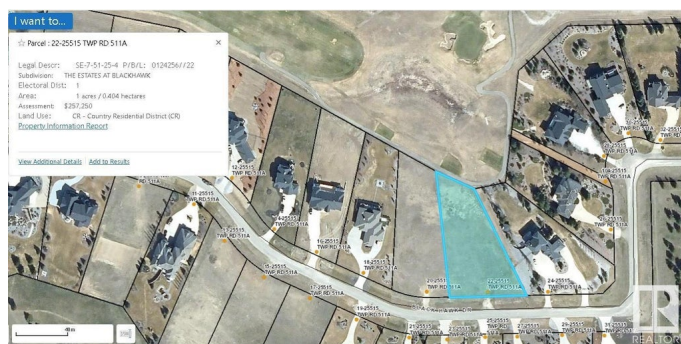
**\$379,000**

0 Bedroom, 0.00 Bathroom,

Rural on 1.00 Acres

The Estates at Blackhawk, Rural Parkland County, AB

Here is one of the few remaining building parcels in The Estates at Blackhawk. Backing onto the fairway and a parcel suitable for a walkout style home. There are many fine homes in Blackhawk Estates. Just a short walk to the river valley or to the world class Blackhawk Golf Club (Memberships available). From here it is just a 15 minute drive to west Edmonton or about the same to the International Airport or the Leduc/Nisku area.



## Essential Information

MLS® #	E4446401
Price	\$379,000
Bathrooms	0.00
Acres	1.00
Type	Rural
Sub-Type	Vacant Lot/Land
Status	Active

## Community Information

Address	22 25515 Twp Road 511 A
Area	Rural Parkland County
Subdivision	The Estates at Blackhawk
City	Rural Parkland County

County	ALBERTA
Province	AB
Postal Code	T7Y 1A8

## Exterior

Exterior Features Golf Nearby, Hillside, No Through Road, Sloping Lot, Street Lighting

## Additional Information

Date Listed	July 7th, 2025
Days on Market	1
Zoning	Zone 90

DATA IS DEEMED RELIABLE BUT IS NOT GUARANTEED ACCURATE BY THE REALTORS® ASSOCIATION OF EDMONTON. COPYRIGHT 2025 BY THE REALTORS® ASSOCIATION OF EDMONTON. ALL RIGHTS RESERVED. Trademarks are owned or controlled by the Canadian Real Estate Association (CREA) and identify real estate professionals who are members of CREA (REALTOR®, REALTORS®) and/or the quality of services they provide (MLS®, Multiple Listing Service®)

Listing information last updated on July 8th, 2025 at 12:18pm MDT