

## \$229,900 - 12 3812 20 Avenue, Edmonton

MLS® #E4445650

**\$229,900**

4 Bedroom, 2.00 Bathroom, 1,077 sqft

Condo / Townhouse on 0.00 Acres

Daly Grove, Edmonton, AB

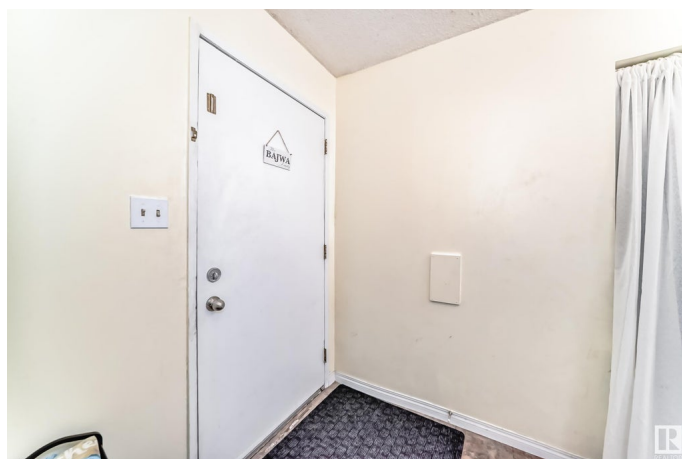
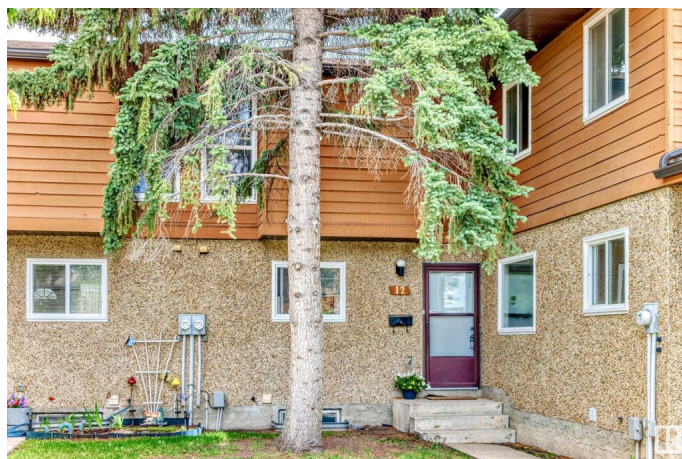
Dream Townhouse Living in Tamarack Park. Discover your perfect home in the vibrant and family-friendly community of Daly Grove. This townhouse offers the ideal blend of comfort, convenience, and a welcoming atmosphere. Step Inside Your Sanctuary. Spacious & Bright: Enjoy an open-concept layout with large windows that flood the main floor with natural light, perfect for entertaining or relaxing. Unleash your inner chef in a well-appointed kitchen. Experience a sense of separation and warmth in the charming sunken living room, ideal for unwinding by the fireplace. Comfortable Bedrooms: Retreat to 3 generous bedrooms upstairs, including a primary suite with 2 closets. Convenient Living: Benefit from 1.5 bathrooms, a separate laundry room, and 2 additional bedrooms in the basement making daily life a breeze. Private Outdoor Space: Enjoy your very own fenced backyard with maintenance free yard, perfect for summer BBQs or a quiet morning coffee. Low Maintenance Living: Enjoy peace of mind with low condo fees.

Built in 1980

### Essential Information

MLS® # E4445650

Price \$229,900



Bedrooms	4
Bathrooms	2.00
Full Baths	2
Square Footage	1,077
Acres	0.00
Year Built	1980
Type	Condo / Townhouse
Sub-Type	Townhouse
Style	2 Storey
Status	Active

### **Community Information**

Address	12 3812 20 Avenue
Area	Edmonton
Subdivision	Daly Grove
City	Edmonton
County	ALBERTA
Province	AB
Postal Code	T6L 4B2

### **Amenities**

Amenities	Parking-Visitor
Parking Spaces	1
Parking	Stall

### **Interior**

Appliances	Dishwasher-Built-In, Dryer, Refrigerator, Stove-Electric, Washer
Heating	Forced Air-1, Natural Gas
Fireplace	Yes
Fireplaces	Glass Door, Mantel
Stories	2
Has Basement	Yes
Basement	Full, Partially Finished

### **Exterior**

Exterior	Wood, Stucco
Exterior Features	Fenced, Flat Site, Landscaped, Low Maintenance Landscape, Schools
Roof	Asphalt Shingles
Construction	Wood, Stucco

Foundation                      Concrete Perimeter

**Additional Information**

Date Listed                      July 3rd, 2025  
Days on Market                8  
Zoning                              Zone 29  
Condo Fee                        \$266

DATA IS DEEMED RELIABLE BUT IS NOT GUARANTEED ACCURATE BY THE REALTORS® ASSOCIATION OF EDMONTON. COPYRIGHT 2025 BY THE REALTORS® ASSOCIATION OF EDMONTON. ALL RIGHTS RESERVED.Trademarks are owned or controlled by the Canadian Real Estate Association (CREA) and identify real estate professionals who are members of CREA (REALTOR®, REALTORS®) and/or the quality of services they provide (MLS®, Multiple Listing Service®)  
Listing information last updated on July 11th, 2025 at 4:48pm MDT