

\$499,800 - 608 Beck Close, Edmonton

MLS® #E4445049

\$499,800

3 Bedroom, 3.00 Bathroom, 1,546 sqft

Single Family on 0.00 Acres

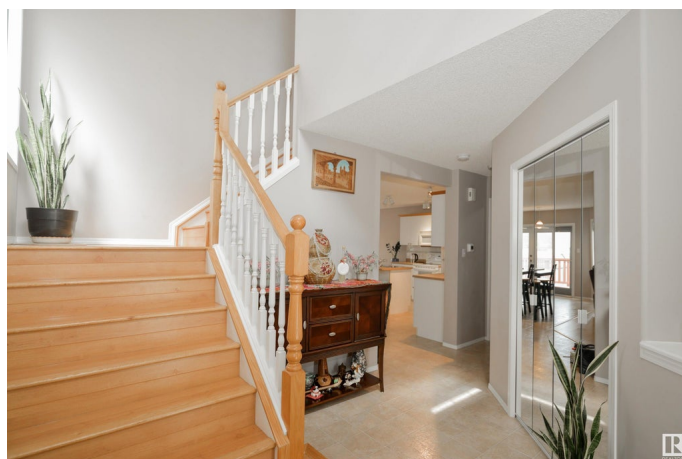
Blackmud Creek, Edmonton, AB

Immaculately maintained. This home is conveniently located just off Ellerslie Rd and just a few mins to the Henday. As you enter the home, you'll notice the high ceilings in the foyer and a little decorative nook. The main floor features corner pantry in the kitchen with an eat up island, corner gas fireplace, & main floor laundry. Upstairs, you'll find a large primary bedroom with a 4pc ensuite, a water closet & walk-in closet & 2 additional good sized bedrooms. Upgrades include furnace, HWT, & flooring and driveway. The basement is fully finished with large rec room along with a 2pc bath. With excellent grading all around, this home is solid & move in ready.

Built in 2001

Essential Information

MLS® #	E4445049
Price	\$499,800
Bedrooms	3
Bathrooms	3.00
Full Baths	2
Half Baths	2
Square Footage	1,546
Acres	0.00
Year Built	2001
Type	Single Family



Sub-Type	Detached Single Family
Style	2 Storey
Status	Active

Community Information

Address	608 Beck Close
Area	Edmonton
Subdivision	Blackmud Creek
City	Edmonton
County	ALBERTA
Province	AB
Postal Code	T6J 6X2

Amenities

Amenities	Deck, No Animal Home, No Smoking Home, Vinyl Windows
Parking	Double Garage Attached

Interior

Interior Features	ensuite bathroom
Appliances	Dishwasher-Built-In, Dryer, Freezer, Microwave Hood Fan, Refrigerator, Stove-Electric, Washer
Heating	Forced Air-1, Natural Gas
Stories	3
Has Basement	Yes
Basement	Full, Finished

Exterior

Exterior	Wood, Brick, Vinyl
Exterior Features	Cul-De-Sac
Roof	Asphalt Shingles
Construction	Wood, Brick, Vinyl
Foundation	Concrete Perimeter

School Information

Elementary	Roberta Macadams
Middle	DS Mackenzie
High	Dr. Anne Anderson

Additional Information

Date Listed	June 30th, 2025
-------------	-----------------

Days on Market 1

Zoning Zone 55

DATA IS DEEMED RELIABLE BUT IS NOT GUARANTEED ACCURATE BY THE REALTORS® ASSOCIATION OF EDMONTON. COPYRIGHT 2025 BY THE REALTORS® ASSOCIATION OF EDMONTON. ALL RIGHTS RESERVED. Trademarks are owned or controlled by the Canadian Real Estate Association (CREA) and identify real estate professionals who are members of CREA (REALTOR®, REALTORS®) and/or the quality of services they provide (MLS®, Multiple Listing Service®)

Listing information last updated on July 1st, 2025 at 2:47am MDT