

\$739,000 - 3235 16 Avenue, Edmonton

MLS® #E4444778

\$739,000

4 Bedroom, 4.00 Bathroom, 2,391 sqft

Single Family on 0.00 Acres

Laurel, Edmonton, AB

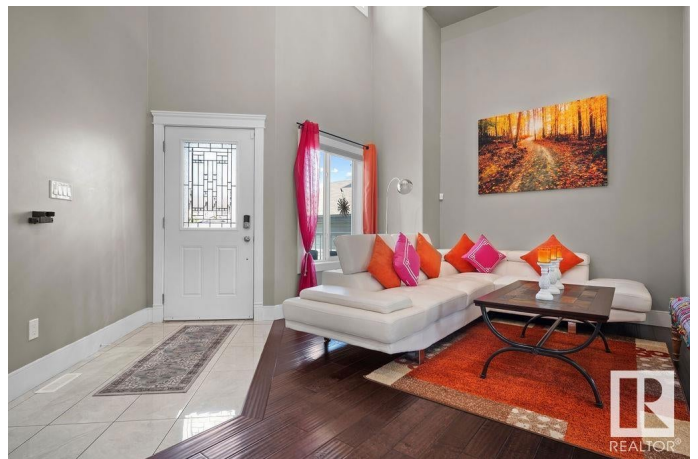
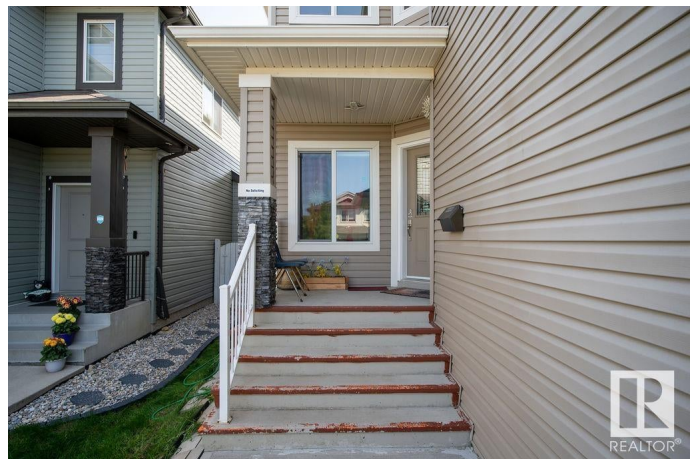
Welcome to this beautifully upgraded home and Well maintained in the sought-after community of Laurel, offering nearly 2,400 SQFT of living space with a SIDE ENTRANCE. As you enter, you're greeted by a spacious OPEN TO BELOW, a formal living room, and a separate dining area. Toward the back of the home, the open-concept family room and kitchen blend style and functionality, featuring a walk-in pantry and breakfast nook. The living room is cozy with a gas fireplace. The main floor also includes a full bedroom and full bathroom. Upstairs, enjoy 3 generously sized bedrooms, including a spacious primary suite with a walk-in closet and a luxurious 5-piece ensuite. A large bonus room overlooks the living room below, and walk-in laundry. Basement is also fully finished With SIDE ENTRANCE, full washroom and a LUXURY BAR. The fully landscaped backyard includes a deck and storage shed. This house come with A/C Central. Located close to schools, parks, shopping, and transit.

Built in 2014

Essential Information

MLS® # E4444778

Price \$739,000



Bedrooms	4
Bathrooms	4.00
Full Baths	4
Square Footage	2,391
Acres	0.00
Year Built	2014
Type	Single Family
Sub-Type	Detached Single Family
Style	2 Storey
Status	Active

Community Information

Address	3235 16 Avenue
Area	Edmonton
Subdivision	Laurel
City	Edmonton
County	ALBERTA
Province	AB
Postal Code	T6T 0T8

Amenities

Amenities	See Remarks
Parking	Double Garage Attached

Interior

Interior Features	ensuite bathroom
Appliances	Air Conditioning-Central, Dishwasher-Built-In, Dryer, Garage Control, Garage Opener, Hood Fan, Oven-Built-In, Refrigerator, Stove-Countertop Electric, Washer, Curtains and Blinds
Heating	Forced Air-1, Natural Gas
Stories	2
Has Basement	Yes
Basement	Full, Unfinished

Exterior

Exterior	Wood, Asphalt
Exterior Features	Fenced, Landscaped, Playground Nearby, Public Transportation, Schools, Shopping Nearby
Roof	Asphalt Shingles

Construction	Wood, Asphalt
Foundation	Concrete Perimeter

Additional Information

Date Listed	June 27th, 2025
Days on Market	14
Zoning	Zone 30

DATA IS DEEMED RELIABLE BUT IS NOT GUARANTEED ACCURATE BY THE REALTORS® ASSOCIATION OF EDMONTON. COPYRIGHT 2025 BY THE REALTORS® ASSOCIATION OF EDMONTON. ALL RIGHTS RESERVED.Trademarks are owned or controlled by the Canadian Real Estate Association (CREA) and identify real estate professionals who are members of CREA (REALTOR®, REALTORS®) and/or the quality of services they provide (MLS®, Multiple Listing Service®)

Listing information last updated on July 11th, 2025 at 1:03pm MDT