

\$395,000 - 10932 165 Street, Edmonton

MLS® #E4443082

\$395,000

3 Bedroom, 2.00 Bathroom, 1,034 sqft
Single Family on 0.00 Acres

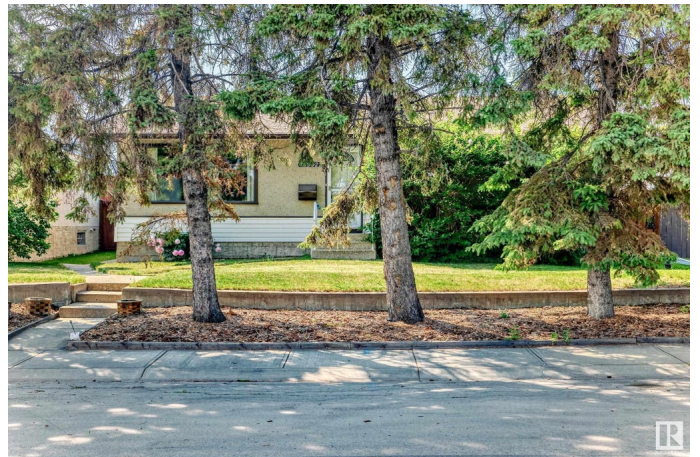
Mayfield, Edmonton, AB

Move-in ready 1,034 sq.ft. bungalow with SEPARATE ENTRY on a 50 x 120 ft. lot and a double garage under \$400,000?!?! You will love this updated home that has had numerous renovations including the kitchen, bathroom, flooring, AC and so much more. The main floor has 2 bedrooms (the primary used to be 2 smaller bedrooms and could be converted back), a full bathroom, spacious living room, and a large kitchen. The basement is finished with a 3rd bedroom, full bathroom, rec room, storage, and laundry. The backyard is an oasis: With the west backing and all the southern light it's great for growing anything a gardener might want, and has a deck, garage, and is fully fenced. Located in Mayfield, you are close to absolutely everything, and have schools, amenities, shopping, and restaurants within minutes of your home. Don't miss out on this amazing value!

Built in 1961

Essential Information

MLS® #	E4443082
Price	\$395,000
Bedrooms	3
Bathrooms	2.00
Full Baths	2
Square Footage	1,034



Acres	0.00
Year Built	1961
Type	Single Family
Sub-Type	Detached Single Family
Style	Bungalow
Status	Active

Community Information

Address	10932 165 Street
Area	Edmonton
Subdivision	Mayfield
City	Edmonton
County	ALBERTA
Province	AB
Postal Code	T5P 3T7

Amenities

Amenities	Air Conditioner, Deck, Detectors Smoke
Parking Spaces	4
Parking	Double Garage Detached

Interior

Appliances	Air Conditioning-Central, Dishwasher-Built-In, Dryer, Hood Fan, Refrigerator, Stove-Electric, Washer
Heating	Forced Air-1, Natural Gas
Stories	2
Has Basement	Yes
Basement	Full, Finished

Exterior

Exterior	Wood, Metal, Stucco
Exterior Features	Back Lane, Fenced, Flat Site, Low Maintenance Landscape, Park/Reserve, Playground Nearby, Public Swimming Pool, Public Transportation, Schools, Shopping Nearby
Lot Description	50 x 120 ft
Roof	Asphalt Shingles
Construction	Wood, Metal, Stucco
Foundation	Concrete Perimeter

Additional Information

Date Listed June 19th, 2025

Days on Market 1

Zoning Zone 21

DATA IS DEEMED RELIABLE BUT IS NOT GUARANTEED ACCURATE BY THE REALTORS® ASSOCIATION OF EDMONTON. COPYRIGHT 2025 BY THE REALTORS® ASSOCIATION OF EDMONTON. ALL RIGHTS RESERVED. Trademarks are owned or controlled by the Canadian Real Estate Association (CREA) and identify real estate professionals who are members of CREA (REALTOR®, REALTORS®) and/or the quality of services they provide (MLS®, Multiple Listing Service®)

Listing information last updated on June 20th, 2025 at 6:47pm MDT