

\$434,900 - 125 Amberley Way, Sherwood Park

MLS® #E4440927

\$434,900

3 Bedroom, 2.50 Bathroom, 1,389 sqft

Single Family on 0.00 Acres

Aspen Trails, Sherwood Park, AB

Welcome to 125 Amberley Way! This stylish and contemporary 3-bedroom, 2.5-bath home effortlessly combines form and function. Located in a family-friendly neighborhood, this stunning property boasts a fresh, modern design with an open-concept layout perfect for everyday living and entertaining. Step inside to find a bright and airy main floor flooded with natural light. The sleek kitchen features laminate countertops, stainless steel appliances, and a spacious island with bar seating. The dining and living areas flow seamlessly together, making it easy to host gatherings or enjoy cozy nights in. Upstairs, youâ€™ll find three generously sized bedrooms, including a beautiful primary suite with a walk-in closet and a private 4-piece ensuite. A second full bathroom and convenient upper-level laundry add to the home's practicality. Outside, enjoy the sunny backyard and the peace of mind of being in a well-kept community close to parks, schools, shopping, and major commuting routes.

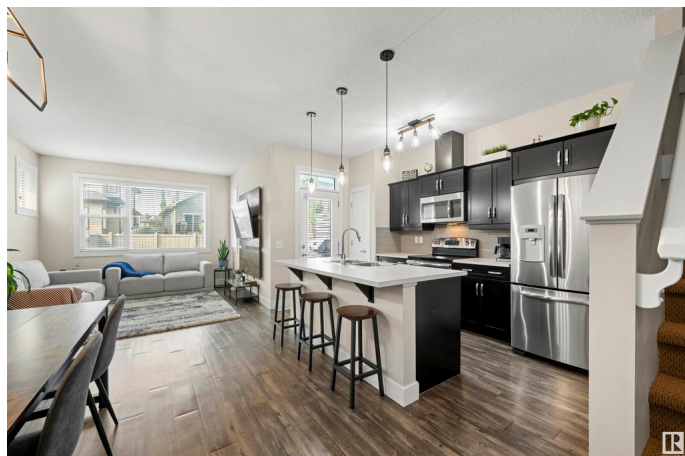
Built in 2015

Essential Information

MLS® # E4440927

Price \$434,900

Bedrooms 3



Bathrooms	2.50
Full Baths	2
Half Baths	1
Square Footage	1,389
Acres	0.00
Year Built	2015
Type	Single Family
Sub-Type	Half Duplex
Style	2 Storey
Status	Active

Community Information

Address	125 Amberley Way
Area	Sherwood Park
Subdivision	Aspen Trails
City	Sherwood Park
County	ALBERTA
Province	AB
Postal Code	T8H 0X2

Amenities

Amenities	Deck, Fire Pit, Front Porch, Vinyl Windows
Parking	Single Garage Attached

Interior

Interior Features	ensuite bathroom
Appliances	Dishwasher-Built-In, Dryer, Garage Control, Garage Opener, Refrigerator, Stove-Electric, Washer, Window Coverings
Heating	Forced Air-1, Natural Gas
Stories	2
Has Basement	Yes
Basement	Full, Unfinished

Exterior

Exterior	Wood, Vinyl
Exterior Features	Fenced, Flat Site, No Back Lane, Playground Nearby, Public Transportation, Schools, Shopping Nearby
Roof	Asphalt Shingles
Construction	Wood, Vinyl

Foundation Concrete Perimeter

Additional Information

Date Listed June 6th, 2025

Days on Market 10

Zoning Zone 25

DATA IS DEEMED RELIABLE BUT IS NOT GUARANTEED ACCURATE BY THE REALTORS® ASSOCIATION OF EDMONTON. COPYRIGHT 2025 BY THE REALTORS® ASSOCIATION OF EDMONTON. ALL RIGHTS RESERVED.Trademarks are owned or controlled by the Canadian Real Estate Association (CREA) and identify real estate professionals who are members of CREA (REALTOR®, REALTORS®) and/or the quality of services they provide (MLS®, Multiple Listing Service®)

Listing information last updated on June 16th, 2025 at 11:32am MDT