

## \$419,900 - 8107 171 Street, Edmonton

MLS® #E4438865

**\$419,900**

5 Bedroom, 3.00 Bathroom, 1,502 sqft

Single Family on 0.00 Acres

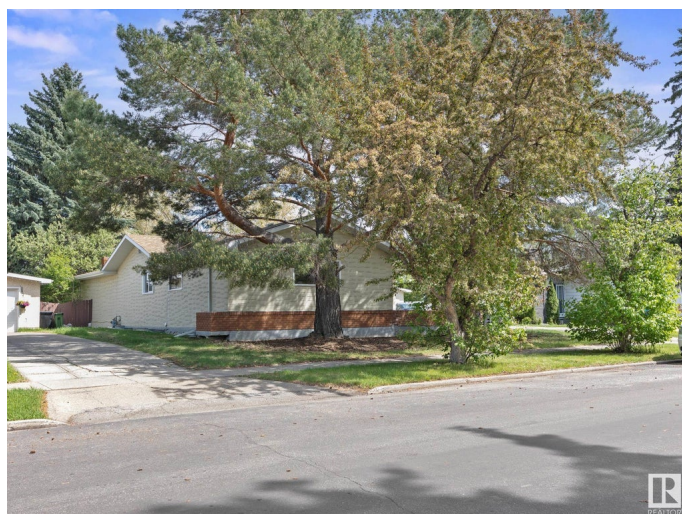
Thornccliffe (Edmonton), Edmonton, AB

Spacious 1,500 Sq. Ft. Bungalow on a Prime 60' x 130' Lot in Thornccliffe This well-appointed bungalow offers exceptional space and redevelopment potential in the desirable community of Thornccliffe. Freshly Painted, Featuring three bedrooms on the main floor and two additional bedrooms in the fully developed basement, this home provides ample room for families or investment opportunities. The functional layout includes generous entertainment areas, large yard, 3 Bathrooms!, and a double detached garage for convenience. Recent updates, including a new roof, New Garage Door, enhance long-term value. Situated on a large lot, this property is ideal for long-term enjoyment, or as an investment property. With easy access to transit, Anthony Henday Drive, and Whitemud Drive, commuting and amenities are just minutes away. Excellent opportunity awaits.

Built in 1971

### Essential Information

MLS® #	E4438865
Price	\$419,900
Bedrooms	5
Bathrooms	3.00
Full Baths	3
Square Footage	1,502



Acres	0.00
Year Built	1971
Type	Single Family
Sub-Type	Detached Single Family
Style	Bungalow
Status	Active

### Community Information

Address	8107 171 Street
Area	Edmonton
Subdivision	Thorncliffe (Edmonton)
City	Edmonton
County	ALBERTA
Province	AB
Postal Code	T5T 0C4

### Amenities

Amenities	Hot Water Natural Gas, Parking-Extra
Parking	Double Garage Detached

### Interior

Interior Features	ensuite bathroom
Appliances	Dishwasher-Built-In, Dryer, Hood Fan, Refrigerator, Stove-Electric, Washer
Heating	Forced Air-1, Natural Gas
Stories	2
Has Basement	Yes
Basement	Full, Finished

### Exterior

Exterior	Wood, See Remarks
Exterior Features	Backs Onto Park/Trees, Fenced, Flat Site, Fruit Trees/Shrubs, Landscaped, Schools, Shopping Nearby
Roof	Asphalt Shingles
Construction	Wood, See Remarks
Foundation	Concrete Perimeter

### School Information

Elementary	La Perle
------------	----------

Middle	H.E. Beriault
High	St. Francis Xavier

### **Additional Information**

Date Listed	May 28th, 2025
Days on Market	15
Zoning	Zone 20

DATA IS DEEMED RELIABLE BUT IS NOT GUARANTEED ACCURATE BY THE REALTORS® ASSOCIATION OF EDMONTON. COPYRIGHT 2025 BY THE REALTORS® ASSOCIATION OF EDMONTON. ALL RIGHTS RESERVED. Trademarks are owned or controlled by the Canadian Real Estate Association (CREA) and identify real estate professionals who are members of CREA (REALTOR®, REALTORS®) and/or the quality of services they provide (MLS®, Multiple Listing Service®)

Listing information last updated on June 12th, 2025 at 7:47pm MDT