

\$240,000 - 3450 43 Avenue, Edmonton

MLS® #E4438331

\$240,000

3 Bedroom, 1.50 Bathroom, 667 sqft

Condo / Townhouse on 0.00 Acres

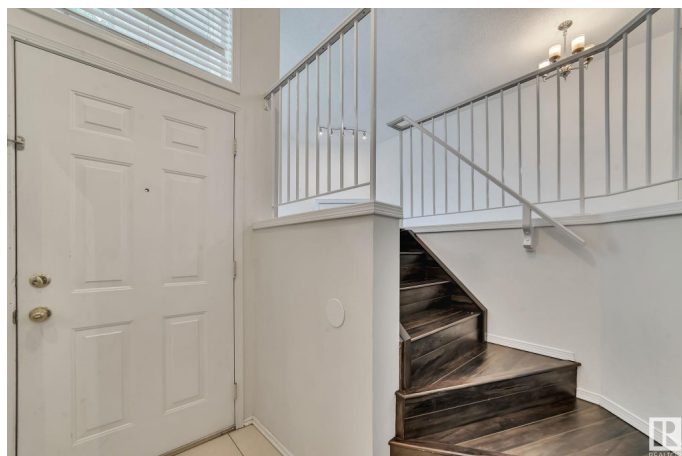
Kiniski Gardens, Edmonton, AB

A small but cute and very well maintained complex. Ready to move in. Comfortable living over 1300 sf of living space, Most conveniently located near 3 schools, DayCare, physiotherapy, Medical, Dental clinic, Gas stations, Convenience stores (just next door), Industrial area and what not. Super Store, Home Depot, Walmart, Shoppers, Banks, ETS Bus terminal etc are just on a few minutes' drive. Bus stop just outside. Easy access to 34 St, Whitemud Drive and Anthony Henday. 2 Parking stalls #3450 and #5 are assigned and not titled.

Built in 1993

Essential Information

MLS® #	E4438331
Price	\$240,000
Bedrooms	3
Bathrooms	1.50
Full Baths	1
Half Baths	1
Square Footage	667
Acres	0.00
Year Built	1993
Type	Condo / Townhouse
Sub-Type	Townhouse
Style	Bi-Level



Status Active

Community Information

Address 3450 43 Avenue
Area Edmonton
Subdivision Kiniski Gardens
City Edmonton
County ALBERTA
Province AB
Postal Code T6L 6W9

Amenities

Amenities Car Wash, Crawl Space, Hot Water Natural Gas, No Animal Home, No Smoking Home
Parking 2 Outdoor Stalls

Interior

Appliances Dishwasher-Built-In, Dryer, Microwave Hood Fan, Refrigerator, Stove-Electric, Washer, Window Coverings
Heating Forced Air-1, Natural Gas
Fireplace Yes
Fireplaces Glass Door
Stories 2
Has Basement Yes
Basement Full, Finished

Exterior

Exterior Wood, Vinyl
Exterior Features Corner Lot, Fenced, Landscaped, Low Maintenance Landscape, Playground Nearby, Public Transportation, Schools, Shopping Nearby, See Remarks
Roof Asphalt Shingles
Construction Wood, Vinyl
Foundation Concrete Perimeter

School Information

Elementary Julia Kiniski
Middle Thelma Chalifoux School
High J Percy Page

Additional Information

Date Listed	May 23rd, 2025
Days on Market	2
Zoning	Zone 29
Condo Fee	\$225

DATA IS DEEMED RELIABLE BUT IS NOT GUARANTEED ACCURATE BY THE REALTORS® ASSOCIATION OF EDMONTON. COPYRIGHT 2025 BY THE REALTORS® ASSOCIATION OF EDMONTON. ALL RIGHTS RESERVED. Trademarks are owned or controlled by the Canadian Real Estate Association (CREA) and identify real estate professionals who are members of CREA (REALTOR®, REALTORS®) and/or the quality of services they provide (MLS®, Multiple Listing Service®)

Listing information last updated on May 25th, 2025 at 6:02am MDT