

\$229,900 - 11422 83 Street, Edmonton

MLS® #E4438020

\$229,900

2 Bedroom, 1.50 Bathroom, 732 sqft

Single Family on 0.00 Acres

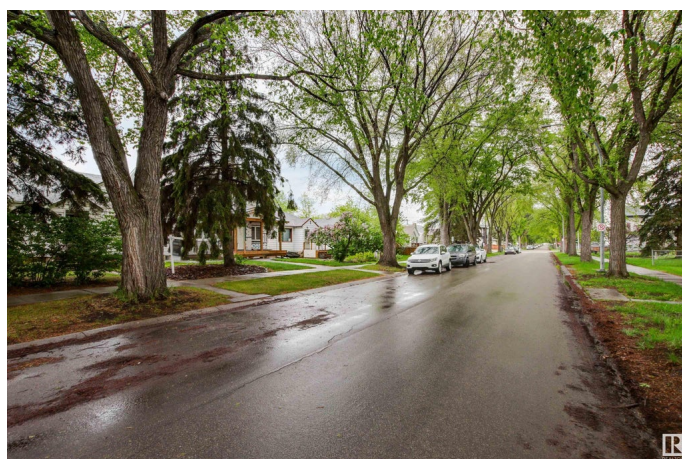
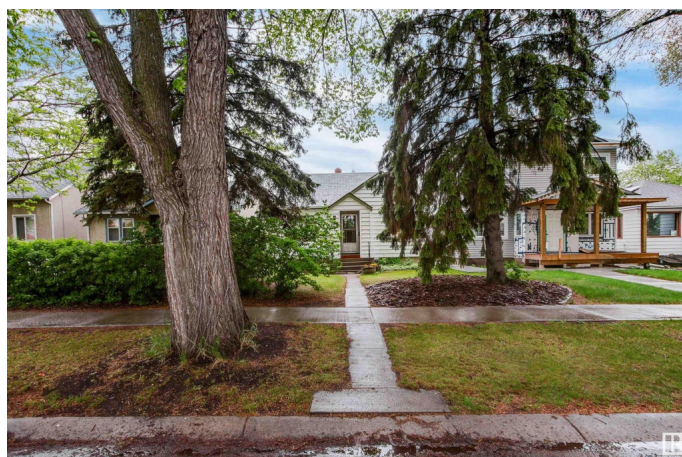
Parkdale (Edmonton), Edmonton, AB

Looking for the perfect blend of charm, convenience, and location? This 2 bedroom bungalow is nestled on a beautifully tree-lined street in the heart of Parkdale--one of Edmonton's most accessible neighborhoods! It's close to Borden Park. Borden Park Swimming Pool, Borden Park, Commonwealth Stadium, and the LRT offer easy access to downtown Edmonton. This home is an excellent opportunity for first-time buyers, builders, or investors seeking a property with great potential in a central neighborhood with many amenities.

Built in 1943

Essential Information

| | |
|----------------|------------------------|
| MLS® # | E4438020 |
| Price | \$229,900 |
| Bedrooms | 2 |
| Bathrooms | 1.50 |
| Full Baths | 1 |
| Half Baths | 1 |
| Square Footage | 732 |
| Acres | 0.00 |
| Year Built | 1943 |
| Type | Single Family |
| Sub-Type | Detached Single Family |
| Style | Bungalow |



| | |
|--------|--------|
| Status | Active |
|--------|--------|

Community Information

| | |
|-------------|---------------------|
| Address | 11422 83 Street |
| Area | Edmonton |
| Subdivision | Parkdale (Edmonton) |
| City | Edmonton |
| County | ALBERTA |
| Province | AB |
| Postal Code | T5B 2Y3 |

Amenities

| | |
|----------------|------------------------|
| Amenities | No Smoking Home |
| Parking Spaces | 2 |
| Parking | Single Garage Detached |

Interior

| | |
|--------------|---|
| Appliances | Dryer, Refrigerator, Stove-Electric, Washer |
| Heating | Forced Air-1, Natural Gas |
| Stories | 1 |
| Has Basement | Yes |
| Basement | Full, Partially Finished |

Exterior

| | |
|-------------------|---|
| Exterior | Wood |
| Exterior Features | Back Lane, Fruit Trees/Shrubs, Golf Nearby, Playground Nearby, Public Swimming Pool, Public Transportation, Shopping Nearby |
| Roof | Asphalt Shingles |
| Construction | Wood |
| Foundation | Concrete Perimeter |

Additional Information

| | |
|----------------|----------------|
| Date Listed | May 22nd, 2025 |
| Days on Market | 3 |
| Zoning | Zone 05 |

DATA IS DEEMED RELIABLE BUT IS NOT GUARANTEED ACCURATE BY THE REALTORS® ASSOCIATION OF EDMONTON. COPYRIGHT 2025 BY THE REALTORS® ASSOCIATION OF EDMONTON. ALL RIGHTS RESERVED. Trademarks are owned or controlled by the Canadian Real Estate Association (CREA) and identify real estate professionals who are members of CREA (REALTOR®, REALTORS®) and/or the quality of services they provide (MLS®, Multiple Listing Service®).

Listing information last updated on May 25th, 2025 at 1:17am MDT