

## \$678,800 - 1914 159 Street, Edmonton

MLS® #E4437855

**\$678,800**

4 Bedroom, 3.50 Bathroom, 1,930 sqft

Single Family on 0.00 Acres

Glenridding Ravine, Edmonton, AB

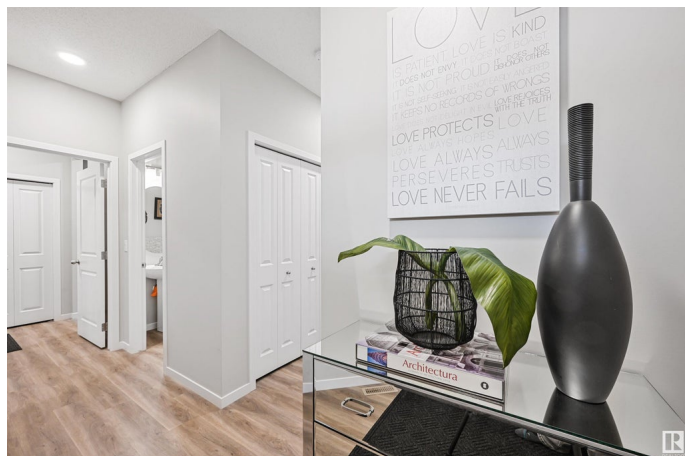
Like new gorgeous upgraded Morrison 2 story nestled on a quiet street in Glenridding Ravine, just steps to the pond & ravine. Approximately 2600sf of total living space as the basement is professionally finished! Upgrades galore w/ over \$75,000 in extras. Dream kitchen w/ upgraded Bosch appliances including a gas stove & two ovens. There's even a Butler's pantry w/ a beverage cooler! Upgraded cabinetry & flooring throughout. Open concept plan is the perfect main floor entertaining space. Plus main flr den. Upstairs find a bonus rm & laundry. 3 bedrms incl a luxurious primary suite featuring an ensuite w/an oversized tiled shower & dual sinks. LPV flooring in the bedrms! Lower level has a family rm, bedrm, 3 pc bath, storage & a flex area. Huge mudrm, lots of storage built-ins & a dbl garage w/extra depth on one side (can accommodate an extended cab pickup). Large exterior patio w/ pergola as well! Restaurants & shops close by incl Windermere Currents & Edm South Cm. Easy access to EIA & the Anthony Henday

Built in 2022

### Essential Information

MLS® # E4437855

Price \$678,800



|                |                        |
|----------------|------------------------|
| Bedrooms       | 4                      |
| Bathrooms      | 3.50                   |
| Full Baths     | 3                      |
| Half Baths     | 1                      |
| Square Footage | 1,930                  |
| Acres          | 0.00                   |
| Year Built     | 2022                   |
| Type           | Single Family          |
| Sub-Type       | Detached Single Family |
| Style          | 2 Storey               |
| Status         | Active                 |

### Community Information

|             |                    |
|-------------|--------------------|
| Address     | 1914 159 Street    |
| Area        | Edmonton           |
| Subdivision | Glenridding Ravine |
| City        | Edmonton           |
| County      | ALBERTA            |
| Province    | AB                 |
| Postal Code | T6W 4X7            |

### Amenities

|           |   |
|-----------|---|
| Amenities | Ceiling 9 ft., Detectors Smoke, Vinyl Windows, HRV System |
| Parking   | Double Garage Attached                                    |

### Interior

|                   |  |
|-------------------|--|
| Interior Features | ensuite bathroom   |
| Appliances        | Dishwasher-Built-In, Dryer, Garage Control, Garage Opener, Hood Fan, Oven-Built-In, Oven-Microwave, Refrigerator, Stove-Countertop Gas, Washer, Window Coverings, Wine/Beverage Cooler |
| Heating           | Forced Air-1, Natural Gas  |
| Fireplace         | Yes  |
| Fireplaces        | Insert   |
| Stories           | 3  |
| Has Basement      | Yes  |
| Basement          | Full, Finished   |

### Exterior

|          |                    |
|----------|--------------------|
| Exterior | Wood, Stone, Vinyl |
|----------|--------------------|

|                   |  |
|-------------------|--|
| Exterior Features | Airport Nearby, Back Lane, Public Transportation, Schools, Shopping Nearby |
| Roof              | Asphalt Shingles   |
| Construction      | Wood, Stone, Vinyl   |
| Foundation        | Concrete Perimeter   |

### **School Information**

|            |                        |
|------------|------------------------|
| Elementary | DrArmour/JoanCarr      |
| Middle     | DonaldGetty/JoanCarr   |
| High       | DrAnderson/FMMcCaffery |

### **Additional Information**

|                |                |
|----------------|----------------|
| Date Listed    | May 22nd, 2025 |
| Days on Market | 17             |
| Zoning         | Zone 56        |

DATA IS DEEMED RELIABLE BUT IS NOT GUARANTEED ACCURATE BY THE REALTORS® ASSOCIATION OF EDMONTON. COPYRIGHT 2025 BY THE REALTORS® ASSOCIATION OF EDMONTON. ALL RIGHTS RESERVED.Trademarks are owned or controlled by the Canadian Real Estate Association (CREA) and identify real estate professionals who are members of CREA (REALTOR®, REALTORS®) and/or the quality of services they provide (MLS®, Multiple Listing Service®)

Listing information last updated on June 7th, 2025 at 11:17pm MDT