

\$464,888 - 21340 88 Avenue, Edmonton

MLS® #E4436919

\$464,888

3 Bedroom, 2.00 Bathroom, 1,132 sqft

Single Family on 0.00 Acres

Suder Greens, Edmonton, AB

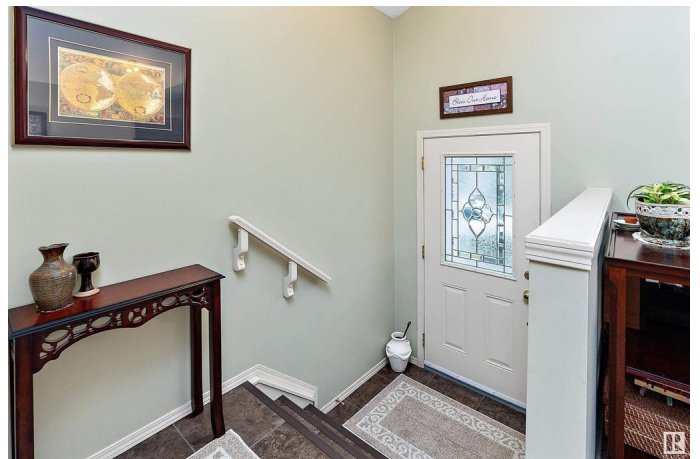
Welcome to Suder Greens! This bright, spacious bi-level offers over 2,100 sq ft of functional living space with 3 bedrooms & 2 full baths. Enjoy abundant natural light thanks to oversized windows on both levels—a hallmark of the bi-level design. The main floor features a generous living room, open dining area, and a well-laid-out kitchen. Step outside to a beautifully landscaped yard with mature trees, flower beds, garden box, and a ground-level deck—perfect for morning coffee or summer evenings. A second deck runs along the side of the home, attached to both the house and fence for added utility. The oversized primary bedroom features a large window overlooking the tranquil backyard. Downstairs, you'll find a large family room, additional bedroom, full bath, and laundry—brightened by large windows for a spacious feel. Walking distance to parks, trails, schools, golf, and transit, with quick access to West Edmonton Mall, Whitemud Drive, and Anthony Henday. This immaculately maintained home could be yours!

Built in 2003

Essential Information

MLS® # E4436919

Price \$464,888



Bedrooms	3
Bathrooms	2.00
Full Baths	2
Square Footage	1,132
Acres	0.00
Year Built	2003
Type	Single Family
Sub-Type	Detached Single Family
Style	Bi-Level
Status	Active

Community Information

Address	21340 88 Avenue
Area	Edmonton
Subdivision	Suder Greens
City	Edmonton
County	ALBERTA
Province	AB
Postal Code	T5T 6V1

Amenities

Amenities	Deck, Detectors Smoke, No Animal Home, No Smoking Home, Vaulted Ceiling, See Remarks
Parking	Double Garage Detached

Interior

Appliances	Dishwasher-Built-In, Dryer, Hood Fan, Refrigerator, Stove-Electric, Washer
Heating	Forced Air-1, Natural Gas
Stories	2
Has Basement	Yes
Basement	Full, Finished

Exterior

Exterior	Wood, Vinyl
Exterior Features	Back Lane, Fenced, Flat Site, Fruit Trees/Shrubs, Landscaped, Playground Nearby, Public Transportation, Schools, Shopping Nearby, See Remarks
Roof	Asphalt Shingles

Construction	Wood, Vinyl
Foundation	Concrete Perimeter

School Information

Elementary	Winterburn School
Middle	Michael Phair School
High	Jasper Place School

Additional Information

Date Listed	May 16th, 2025
Days on Market	14
Zoning	Zone 58

DATA IS DEEMED RELIABLE BUT IS NOT GUARANTEED ACCURATE BY THE REALTORS® ASSOCIATION OF EDMONTON. COPYRIGHT 2025 BY THE REALTORS® ASSOCIATION OF EDMONTON. ALL RIGHTS RESERVED.Trademarks are owned or controlled by the Canadian Real Estate Association (CREA) and identify real estate professionals who are members of CREA (REALTOR®, REALTORS®) and/or the quality of services they provide (MLS®, Multiple Listing Service®)

Listing information last updated on May 30th, 2025 at 10:03am MDT