

\$1,195,000 - 139 52304 Rge Road 233, Rural Strathcona County

MLS® #E4436668

\$1,195,000

4 Bedroom, 4.00 Bathroom, 2,644 sqft

Rural on 0.33 Acres

Fountain Creek Estates, Rural Strathcona County, AB

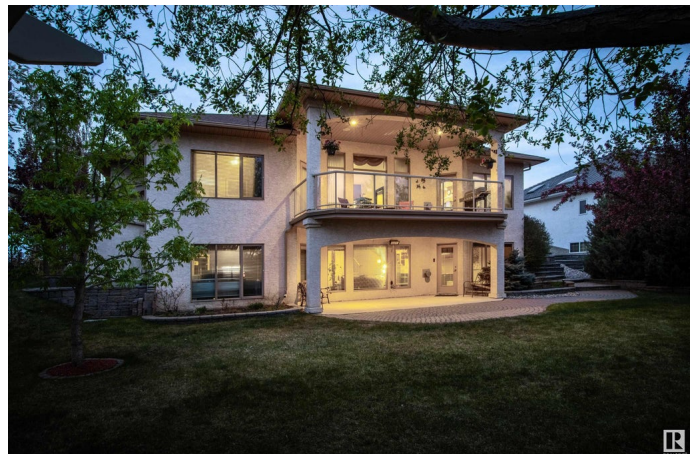
Experience luxury living in this spectacular walk-out bungalow, custom-built by Kimberly Homes & nestled in Fountain Creek Estates. Boasting nearly 4,600 sq ft of total living space, this home features a grand main floor w/ a formal dining room, bright living room, cozy 3-sided fireplace & gourmet kitchen w/ solid oak cabinetry, granite countertops, large center island & spacious pantry. The sunlit breakfast nook leads to the covered upper deck - perfect for morning coffee. The primary bdrm impresses w/ private deck access, a spa-like 5-pc ensuite & walk-in closet. An upper-level bonus room w/ its own 4-pc ensuite and balcony is ideal as a private guest or nanny suite. The walk-out basement offers in-floor heating, a games area, wet bar, rec room w/ fireplace & built-ins, laundry room, 2 more large bdrms & a 5-pc bath. Enjoy outdoor entertaining w/ a covered patio, firepit area & beautifully landscaped yard w/ irrigation. A heated triple garage w/ unique basement access completes this exceptional offering

Built in 2000

Essential Information

MLS® #

E4436668



Price	\$1,195,000
Bedrooms	4
Bathrooms	4.00
Full Baths	4
Square Footage	2,644
Acres	0.33
Year Built	2000
Type	Rural
Sub-Type	Detached Single Family
Style	Bungalow
Status	Active

Community Information

Address	139 52304 Rge Road 233
Area	Rural Strathcona County
Subdivision	Fountain Creek Estates
City	Rural Strathcona County
County	ALBERTA
Province	AB
Postal Code	T8B 1C9

Amenities

Features	Air Conditioner, Deck, Detectors Smoke, Fire Pit, No Animal Home, No Smoking Home, Patio, Sprinkler System-Fire, Sprinkler Sys-Underground, Walkout Basement, Wet Bar, See Remarks, Natural Gas BBQ Hookup
----------	--

Interior

Interior Features	ensuite bathroom
Heating	Forced Air-1, In Floor Heat System, Natural Gas
Fireplace	Yes
Stories	2
Has Basement	Yes
Basement	Full, Finished

Exterior

Exterior	Wood
Exterior Features	Creek, Fruit Trees/Shrubs, Golf Nearby, Landscaped, Park/Reserve, Playground Nearby, Private Setting, Treed Lot, See Remarks

Construction	Wood
Foundation	Concrete Perimeter

Additional Information

Date Listed	May 15th, 2025
Days on Market	2
Zoning	Zone 80

DATA IS DEEMED RELIABLE BUT IS NOT GUARANTEED ACCURATE BY THE REALTORS® ASSOCIATION OF EDMONTON. COPYRIGHT 2025 BY THE REALTORS® ASSOCIATION OF EDMONTON. ALL RIGHTS RESERVED.Trademarks are owned or controlled by the Canadian Real Estate Association (CREA) and identify real estate professionals who are members of CREA (REALTOR®, REALTORS®) and/or the quality of services they provide (MLS®, Multiple Listing Service®)

Listing information last updated on May 17th, 2025 at 10:32am MDT