

\$215,000 - 111 Edwards Drive, Edmonton

MLS® #E4436200

\$215,000

2 Bedroom, 2.00 Bathroom, 1,053 sqft

Condo / Townhouse on 0.00 Acres

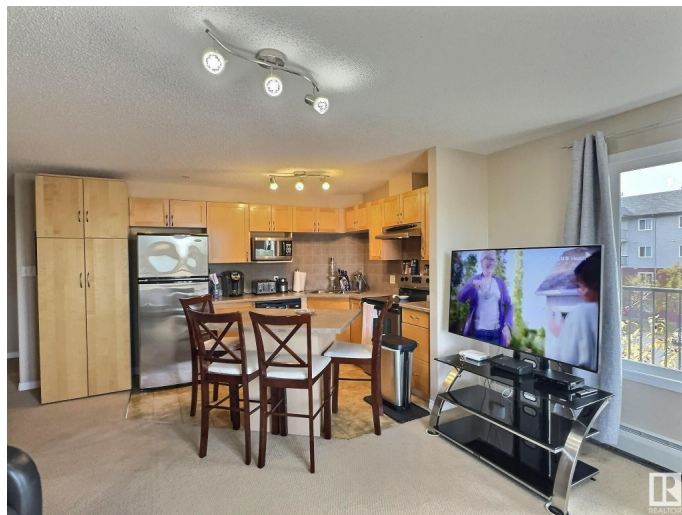
Ellerslie, Edmonton, AB

CORNER unit available for QUICK possession! Spacious two bedroom/two bath unit in a great family friendly building and location. PLUS TWO titled outdoor stalls. In pristine condition with tons of natural light, for a bright and airy feel with an open concept layout. Master bedroom is generous in size and features a walk in closet plus ensuite with tub. Complete with a wrap around SW balcony. Location is close to schools, public transportation, major shopping hubs, restaurants plus quick access to the Anthony Henday and Calgary Trail/Gateway. Great opportunity as an investment, easy to rent and shows 10/10. Pets allowed with board approval.

Built in 2006

Essential Information

MLS® #	E4436200
Price	\$215,000
Bedrooms	2
Bathrooms	2.00
Full Baths	2
Square Footage	1,053
Acres	0.00
Year Built	2006
Type	Condo / Townhouse



Sub-Type	Lowrise Apartment
Style	Single Level Apartment
Status	Active

Community Information

Address	111 Edwards Drive
Area	Edmonton
Subdivision	Ellerslie
City	Edmonton
County	ALBERTA
Province	AB
Postal Code	T6X 0C4

Amenities

Amenities	See Remarks
Parking Spaces	2
Parking	Stall

Interior

Interior Features	ensuite bathroom
Appliances	Dishwasher-Built-In, Dryer, Hood Fan, Refrigerator, Stove-Electric, Washer
Heating	Baseboard, Hot Water, Natural Gas
# of Stories	4
Stories	1
Has Basement	Yes
Basement	None, No Basement

Exterior

Exterior	Wood, Composition
Exterior Features	Landscaped, Playground Nearby, Public Transportation, Schools, Shopping Nearby, See Remarks
Roof	Asphalt Shingles
Construction	Wood, Composition
Foundation	Concrete Perimeter

Additional Information

Date Listed	May 11th, 2025
Days on Market	35

Zoning	Zone 53
Condo Fee	\$552

DATA IS DEEMED RELIABLE BUT IS NOT GUARANTEED ACCURATE BY THE REALTORS® ASSOCIATION OF EDMONTON. COPYRIGHT 2025 BY THE REALTORS® ASSOCIATION OF EDMONTON. ALL RIGHTS RESERVED. Trademarks are owned or controlled by the Canadian Real Estate Association (CREA) and identify real estate professionals who are members of CREA (REALTOR®, REALTORS®) and/or the quality of services they provide (MLS®, Multiple Listing Service®)

Listing information last updated on June 15th, 2025 at 7:02pm MDT