

## \$619,900 - 2460 Ware Crescent, Edmonton

MLS® #E4436097

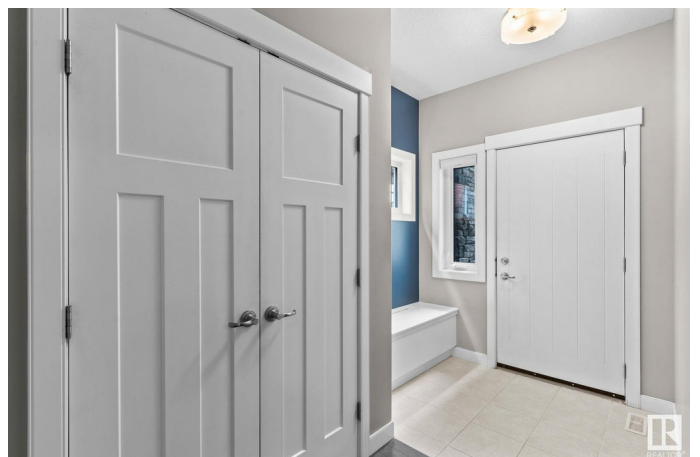
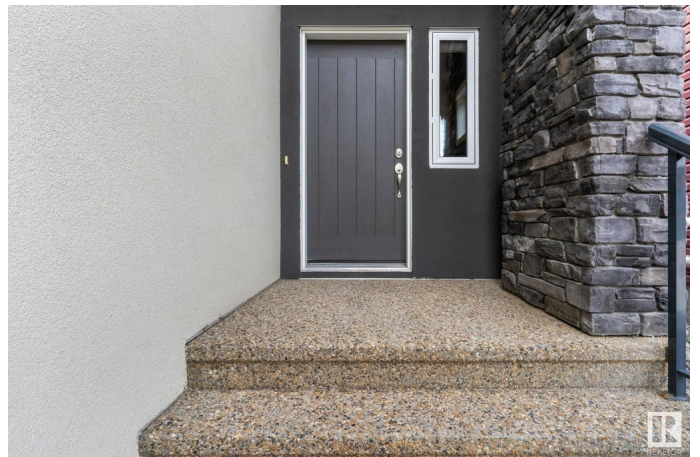
**\$619,900**

3 Bedroom, 2.50 Bathroom, 2,129 sqft

Single Family on 0.00 Acres

Windermere, Edmonton, AB

Welcome to 2460 Ware Crescent NW – a beautifully upgraded 2,051 sq ft two-storey home nestled in the sought-after community of One at Windermere. This modern, meticulously maintained home blends contemporary style with everyday comfort. Step inside to discover an open-concept main floor featuring a chef-inspired kitchen with gleaming quartz countertops, stainless steel appliances, a massive center island, and a corner pantry – perfect for entertaining or family meals. The spacious great room offers a cozy yet sleek stainless steel gas fireplace, and the large mudroom adds practical convenience. Upstairs, you'll find a bright bonus room ideal for movie nights or a home office, a second-floor laundry room, and three generous bedrooms. The elegant primary suite is a true retreat, boasting dual sinks, a relaxing soaker tub, and a fully tiled glass shower. Located minutes from shopping, schools, parks, and trails, this stunning home won't last long. Don't miss your chance to live in one of Edmonton's premier c



Built in 2013

### Essential Information

MLS® # E4436097

Price \$619,900

Bedrooms	3
Bathrooms	2.50
Full Baths	2
Half Baths	1
Square Footage	2,129
Acres	0.00
Year Built	2013
Type	Single Family
Sub-Type	Detached Single Family
Style	2 Storey
Status	Active

### Community Information

Address	2460 Ware Crescent
Area	Edmonton
Subdivision	Windermere
City	Edmonton
County	ALBERTA
Province	AB
Postal Code	T6W 2M7

### Amenities

Amenities	Air Conditioner, Closet Organizers, Deck
Parking Spaces	4
Parking	Double Garage Attached

### Interior

Interior Features	ensuite bathroom
Appliances	Air Conditioning-Central, Dishwasher-Built-In, Dryer, Garage Control, Garage Opener, Microwave Hood Fan, Refrigerator, Stove-Electric, Washer, Window Coverings
Heating	Forced Air-1, Natural Gas
Fireplace	Yes
Fireplaces	Glass Door
Stories	2
Has Basement	Yes
Basement	Full, Unfinished

### Exterior

Exterior	Wood, Stone, Stucco
Exterior Features	Fenced, Golf Nearby, No Back Lane, Playground Nearby, Schools, Shopping Nearby
Roof	Asphalt Shingles
Construction	Wood, Stone, Stucco
Foundation	Concrete Perimeter

### **School Information**

Elementary	Cst D Woodall, St John XXIII
Middle	Riverbend, St John XXIII
High	Lillian O, MMM

### **Additional Information**

Date Listed	May 13th, 2025
Days on Market	2
Zoning	Zone 56

DATA IS DEEMED RELIABLE BUT IS NOT GUARANTEED ACCURATE BY THE REALTORS® ASSOCIATION OF EDMONTON. COPYRIGHT 2025 BY THE REALTORS® ASSOCIATION OF EDMONTON. ALL RIGHTS RESERVED. Trademarks are owned or controlled by the Canadian Real Estate Association (CREA) and identify real estate professionals who are members of CREA (REALTOR®, REALTORS®) and/or the quality of services they provide (MLS®, Multiple Listing Service®)

Listing information last updated on May 15th, 2025 at 1:47pm MDT