

\$178,800 - 202 10815 83 Avenue, Edmonton

MLS® #E4435861

\$178,800

2 Bedroom, 1.00 Bathroom, 806 sqft

Condo / Townhouse on 0.00 Acres

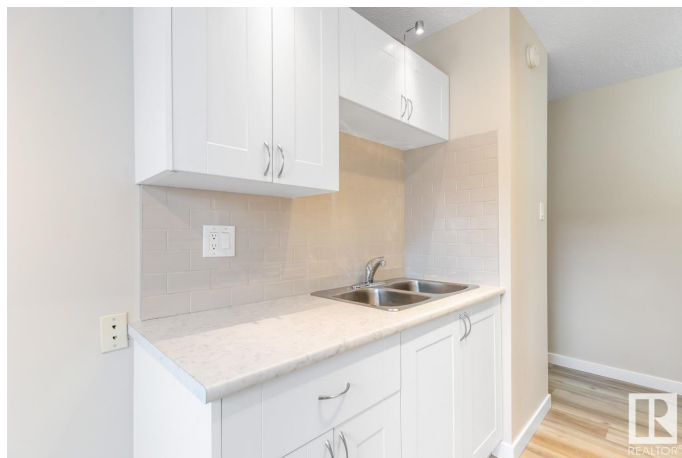
Garneau, Edmonton, AB

GORGEOUS GARNEAU! This spacious **RENOVATED** 2 Bedroom Condo is located within **WALKING DISTANCE** of all amenities - groceries, shopping, banking, restaurants, cafes, bars & transit. Easy access to **UNIVERSITY OF ALBERTA**, University Hospital, and the University Station LRT (quick ride from there to NAIT, MacEwan, Rogers Place, Downtown, Southgate Mall). Bike Lanes out your front door! Running/walking trails close by too. All of this is only 4 - 10 mins drive, walk, bus or bike away! **COVERED PARKING STALL**. South facing Balcony makes for a **BRIGHT & SUNNY** suite all day long. Bonus Features: In-Suite Laundry & **CARPET-FREE** Property. **NO SMOKING BUILDING**. Urban Living at its finest!

Built in 1970

Essential Information

MLS® #	E4435861
Price	\$178,800
Bedrooms	2
Bathrooms	1.00
Full Baths	1
Square Footage	806
Acres	0.00
Year Built	1970



Type	Condo / Townhouse
Sub-Type	Lowrise Apartment
Style	Single Level Apartment
Status	Active

Community Information

Address	202 10815 83 Avenue
Area	Edmonton
Subdivision	Garneau
City	Edmonton
County	ALBERTA
Province	AB
Postal Code	T6E 2E6

Amenities

Amenities	Off Street Parking, Detectors Smoke, Intercom, Parking-Plug-Ins
Parking	Stall

Interior

Appliances	Euro Washer/Dryer Combo, Hood Fan, Refrigerator, Stove-Electric
Heating	Hot Water, Natural Gas
# of Stories	3
Stories	1
Has Basement	Yes
Basement	None, No Basement

Exterior

Exterior	Wood, Vinyl
Exterior Features	Back Lane, Park/Reserve, Playground Nearby, Public Transportation, Schools, Shopping Nearby
Roof	Tar & Gravel
Construction	Wood, Vinyl
Foundation	Concrete Perimeter

School Information

Elementary	Garneau/Mt Carmel
Middle	Allandale/L St Laurent
High	McKernan/L St Laurent

Additional Information

Date Listed	May 11th, 2025
Days on Market	62
Zoning	Zone 15
Condo Fee	\$516

DATA IS DEEMED RELIABLE BUT IS NOT GUARANTEED ACCURATE BY THE REALTORS® ASSOCIATION OF EDMONTON. COPYRIGHT 2025 BY THE REALTORS® ASSOCIATION OF EDMONTON. ALL RIGHTS RESERVED. Trademarks are owned or controlled by the Canadian Real Estate Association (CREA) and identify real estate professionals who are members of CREA (REALTOR®, REALTORS®) and/or the quality of services they provide (MLS®, Multiple Listing Service®)

Listing information last updated on July 12th, 2025 at 8:33pm MDT