

\$850,000 - 10651 68 Ave And 6711 107 Street Avenue, Edmonton

MLS® #E4435617

\$850,000

6 Bedroom, 6.50 Bathroom, 3,024 sqft

Single Family on 0.00 Acres

Allendale, Edmonton, AB

Fantastic full side-by-side duplex on a beautiful tree-lined street, perfect for investors or multi-generational living! One side features vinyl plank flooring, a bright and spacious kitchen with a huge pantry, a main floor den, a half bath, and charming built-ins. Upstairs, three bedrooms each have spacious closets and 4-piece ensuites. Tons of natural light throughout, with a fully finished basement space that can be a family room or play space. The other side offers hardwood flooring, a cozy fireplace, a built-in hutch, a bright kitchen with a cooktop and wall oven, a huge primary bedroom with dual closets, main floor laundry, and a 3-pc bath. Upstairs boasts a large loft area, a 3-pc bath, and extra storage. The fully finished basement includes another kitchen, bedroom, living room, and full bath. A detached double garage, wrap-around patio, and mature landscaping complete this unique property!

Built in 2004

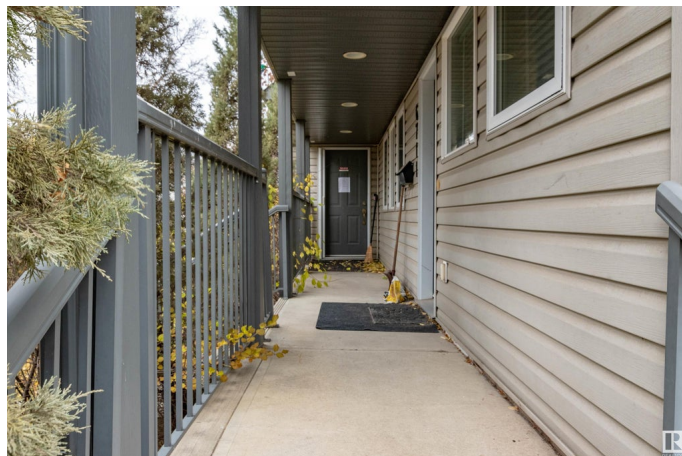
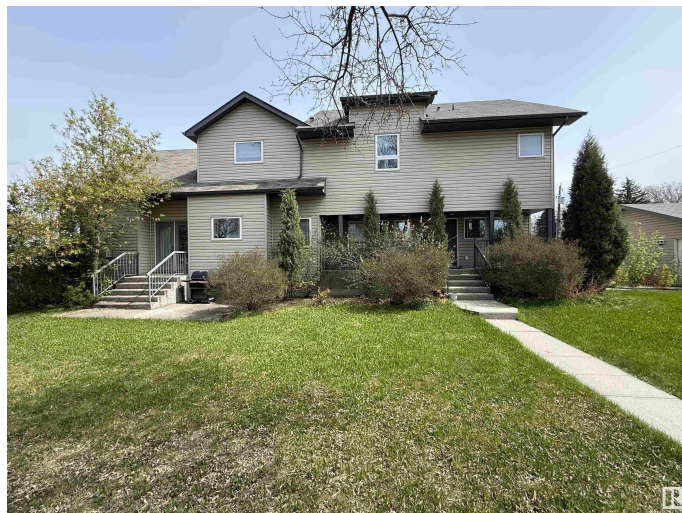
Essential Information

MLS® # E4435617

Price \$850,000

Bedrooms 6

Bathrooms 6.50



Full Baths	6
Half Baths	1
Square Footage	3,024
Acres	0.00
Year Built	2004
Type	Single Family
Sub-Type	Duplex Side By Side
Style	2 Storey
Status	Active

Community Information

Address	10651 68 Ave And 6711 107 Street Avenue
Area	Edmonton
Subdivision	Allendale
City	Edmonton
County	ALBERTA
Province	AB
Postal Code	T6H 2B3

Amenities

Amenities	Off Street Parking, On Street Parking, Detectors Smoke, No Animal Home, No Smoking Home
Parking Spaces	3
Parking	Double Garage Detached

Interior

Interior Features	ensuite bathroom
Appliances	Oven-Built-In, Stove-Electric, Dryer-Two, Refrigerators-Two, Washers-Two, Dishwasher-Two
Heating	Forced Air-1, Natural Gas
Stories	3
Has Basement	Yes
Basement	Full, Finished

Exterior

Exterior	Wood, Vinyl
Exterior Features	Corner Lot, Landscaped, Public Transportation, Schools, Shopping Nearby
Roof	Asphalt Shingles

Construction	Wood, Vinyl
Foundation	Concrete Perimeter

Additional Information

Date Listed	May 8th, 2025
Days on Market	63
Zoning	Zone 15

DATA IS DEEMED RELIABLE BUT IS NOT GUARANTEED ACCURATE BY THE REALTORS® ASSOCIATION OF EDMONTON. COPYRIGHT 2025 BY THE REALTORS® ASSOCIATION OF EDMONTON. ALL RIGHTS RESERVED.Trademarks are owned or controlled by the Canadian Real Estate Association (CREA) and identify real estate professionals who are members of CREA (REALTOR®, REALTORS®) and/or the quality of services they provide (MLS®, Multiple Listing Service®)

Listing information last updated on July 10th, 2025 at 9:03am MDT