

\$519,900 - 707 Hudson Place, Edmonton

MLS® #E4435561

\$519,900

4 Bedroom, 3.50 Bathroom, 1,793 sqft

Single Family on 0.00 Acres

Hudson, Edmonton, AB

Welcome to this stunning 2-storey home nestled in the quiet and family-friendly community of Hudson. This beautifully upgraded property spanning nearly 1,800 SqFt. offers 4 bedrooms, 3.5 bathrooms and large bonus room with plenty of sunlight. The primary bedroom is complete with a walk-in closet and a 4-piece ensuite. The main floor features a bright and open kitchen equipped with stainless steel appliances, granite countertops throughout the home, mosaic tile backsplash, and a cozy stone fireplace in the living area. Enjoy the convenience of main floor laundry, and a fully finished basement that includes a generous rec room, additional bedroom, and a full bathroom. New shingles replaced in 2021 and hot water tank in 2020. This move-in ready home is perfect for families seeking comfort and space or investors looking for a turnkey opportunity in a desirable neighbourhood. Conveniently located near schools, shopping, restaurants and Anthony Henday Dr. Don't miss this opportunity!

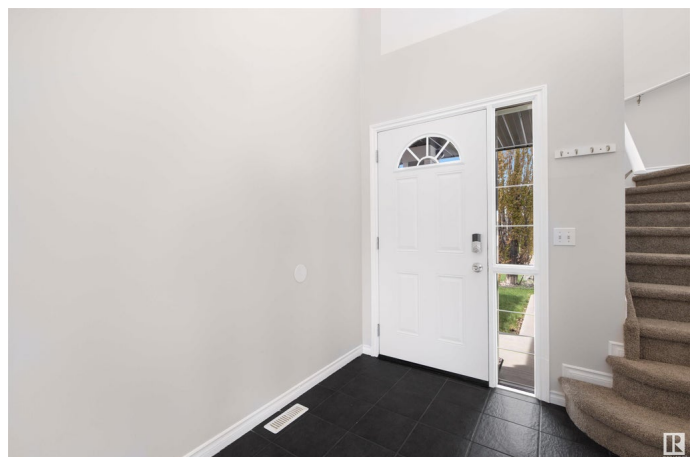
Built in 2004

Essential Information

MLS® # E4435561

Price \$519,900

Bedrooms 4



Bathrooms	3.50
Full Baths	3
Half Baths	1
Square Footage	1,793
Acres	0.00
Year Built	2004
Type	Single Family
Sub-Type	Detached Single Family
Style	2 Storey
Status	Active

Community Information

Address	707 Hudson Place
Area	Edmonton
Subdivision	Hudson
City	Edmonton
County	ALBERTA
Province	AB
Postal Code	T6V 1N6

Amenities

Amenities	Deck, Detectors Smoke, Fire Pit, Natural Gas BBQ Hookup
Parking	Double Garage Attached

Interior

Interior Features	ensuite bathroom
Appliances	Dishwasher-Built-In, Dryer, Garage Control, Garage Opener, Hood Fan, Oven-Microwave, Refrigerator, Stove-Electric, Washer, Window Coverings
Heating	Forced Air-1, Natural Gas
Fireplace	Yes
Fireplaces	Wall Mount
Stories	3
Has Basement	Yes
Basement	Full, Finished

Exterior

Exterior	Wood, Vinyl
Exterior Features	Cul-De-Sac, Landscaped, Playground Nearby, Public Transportation,

	Schools, Shopping Nearby
Roof	Asphalt Shingles
Construction	Wood, Vinyl
Foundation	Concrete Perimeter

Additional Information

Date Listed	May 9th, 2025
Days on Market	2
Zoning	Zone 27

DATA IS DEEMED RELIABLE BUT IS NOT GUARANTEED ACCURATE BY THE REALTORS® ASSOCIATION OF EDMONTON. COPYRIGHT 2025 BY THE REALTORS® ASSOCIATION OF EDMONTON. ALL RIGHTS RESERVED. Trademarks are owned or controlled by the Canadian Real Estate Association (CREA) and identify real estate professionals who are members of CREA (REALTOR®, REALTORS®) and/or the quality of services they provide (MLS®, Multiple Listing Service®)

Listing information last updated on May 10th, 2025 at 10:02pm MDT