

\$549,900 - 35 Eldorado Drive, St. Albert

MLS® #E4435548

\$549,900

3 Bedroom, 2.50 Bathroom, 1,232 sqft

Single Family on 0.00 Acres

Erin Ridge, St. Albert, AB

This stunning home is nestled in a peaceful, park-like environment, offering privacy with mature trees and expansive green space in the backyard. Its prime location is perfect for those who enjoy the outdoors, with walking trails and a nearby park for recreation. The main floor spans 1220 sq ft of bright, open living space, featuring vaulted ceilings in the entrance, living/dining rooms, and kitchen. Oak hardwood floors and ceramic tile flow throughout the home, and the kitchen boasts granite countertops with undermount sinks. A cozy gas fireplace with stone facing enhances the living room. The spacious master bedroom offers dual closets and a 4-piece ensuite. The fully developed lower level includes a large family room with a gas fireplace, two bedrooms, a bonus room, and a 4-piece bathroom with granite finishes. The pristine basement has a large furnace/storage room for extra space. The double front-drive garage is insulated and dry-walled for added convenience. This home truly has it all!

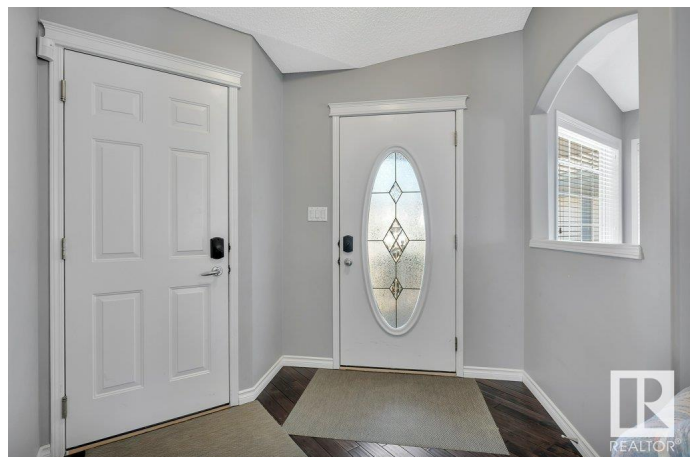
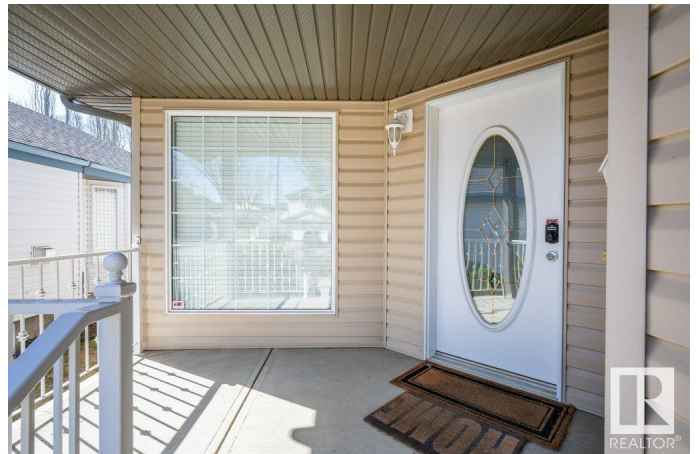
Built in 2004

Essential Information

MLS® # E4435548

Price \$549,900

Bedrooms 3



Bathrooms	2.50
Full Baths	2
Half Baths	1
Square Footage	1,232
Acres	0.00
Year Built	2004
Type	Single Family
Sub-Type	Detached Single Family
Style	Bungalow
Status	Active

Community Information

Address	35 Eldorado Drive
Area	St. Albert
Subdivision	Erin Ridge
City	St. Albert
County	ALBERTA
Province	AB
Postal Code	T8N 7G4

Amenities

Amenities	Deck, Vaulted Ceiling
Parking	Double Garage Attached, Insulated

Interior

Interior Features	ensuite bathroom
Appliances	Dishwasher-Built-In, Dryer, Humidifier-Power(Furnace), Microwave Hood Fan, Refrigerator, Stove-Electric, Vacuum System Attachments, Vacuum Systems, Washer, Window Coverings
Heating	Forced Air-1, Natural Gas
Fireplace	Yes
Fireplaces	Stone Facing
Stories	2
Has Basement	Yes
Basement	Full, Finished

Exterior

Exterior	Wood, Brick, Vinyl
Exterior Features	Fenced, Landscaped, Park/Reserve, Playground Nearby, Schools,

	Shopping Nearby
Roof	Asphalt Shingles
Construction	Wood, Brick, Vinyl
Foundation	Concrete Perimeter

Additional Information

Date Listed	May 9th, 2025
Days on Market	2
Zoning	Zone 24

DATA IS DEEMED RELIABLE BUT IS NOT GUARANTEED ACCURATE BY THE REALTORS® ASSOCIATION OF EDMONTON. COPYRIGHT 2025 BY THE REALTORS® ASSOCIATION OF EDMONTON. ALL RIGHTS RESERVED. Trademarks are owned or controlled by the Canadian Real Estate Association (CREA) and identify real estate professionals who are members of CREA (REALTOR®, REALTORS®) and/or the quality of services they provide (MLS®, Multiple Listing Service®)

Listing information last updated on May 11th, 2025 at 6:47pm MDT