

## \$494,900 - 8576 Cushing Place, Edmonton

MLS® #E4435374

**\$494,900**

4 Bedroom, 3.50 Bathroom, 1,518 sqft

Single Family on 0.00 Acres

Chappelle Area, Edmonton, AB

Awesome 4 bedroom 1517 Sq ft half duplex in Chappelle! This amazing half duplex has a SEPERATE SIDE ENTRANCE LEADING TO A SELF CONTAINED 1 BEDROOM AND 1 BATH INLAW SUITE WITH ITS OWN LAUNDRY AREA. Main floor has spacious foyer that leads you through to the open concept living-room, kitchen with walkthrough pantry to mud room and dining area that leads to a private yard with deck. this home is perfect for entertaining! The modern kitchen features stainless appliances, QUARTZ countertops, ample modern cabinets and an extra large walk through pantry. A well appointed mudroom and 2 piece bath completes this main level. The upper level includes a nice bonus room and extra large laundry room. The master bedroom has a 4 piece ensuite and a large walk-in closet. Two additional bedrooms with large closets, and a 4 piece bathroom complete this level. Home also has Central Air conditioning. A must see property.

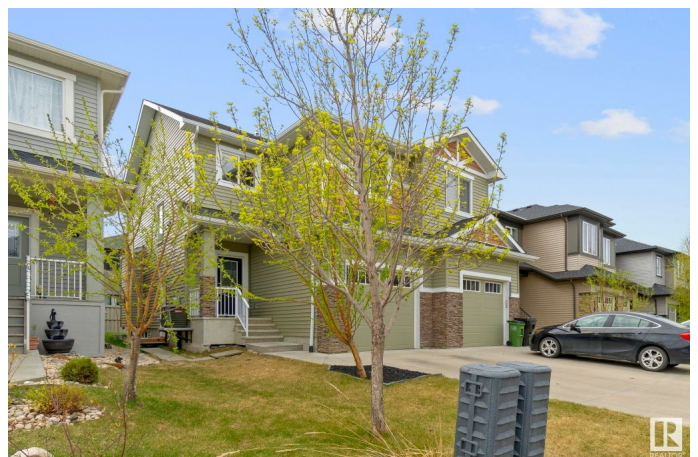
Built in 2017

### Essential Information

MLS® # E4435374

Price \$494,900

Bedrooms 4



Bathrooms	3.50
Full Baths	3
Half Baths	1
Square Footage	1,518
Acres	0.00
Year Built	2017
Type	Single Family
Sub-Type	Half Duplex
Style	2 Storey
Status	Active

### Community Information

Address	8576 Cushing Place
Area	Edmonton
Subdivision	Chappelle Area
City	Edmonton
County	ALBERTA
Province	AB
Postal Code	T6W 3R4

### Amenities

Amenities	Air Conditioner, Deck, See Remarks
Parking Spaces	2
Parking	Single Garage Attached

### Interior

Interior Features	ensuite bathroom
Appliances	Air Conditioning-Central, Dishwasher-Built-In, Garage Control, Garage Opener, Window Coverings, Dryer-Two, Refrigerators-Two, Stoves-Two, Washers-Two
Heating	Forced Air-1, Natural Gas
Fireplace	Yes
Fireplaces	Mantel
Stories	3
Has Suite	Yes
Has Basement	Yes
Basement	Full, Finished

### Exterior

Exterior	Wood, Brick, Vinyl
Exterior Features	Fenced, Landscaped, See Remarks
Roof	Asphalt Shingles
Construction	Wood, Brick, Vinyl
Foundation	Concrete Perimeter

**Additional Information**

Date Listed	May 8th, 2025
Days on Market	1
Zoning	Zone 55

DATA IS DEEMED RELIABLE BUT IS NOT GUARANTEED ACCURATE BY THE REALTORS® ASSOCIATION OF EDMONTON. COPYRIGHT 2025 BY THE REALTORS® ASSOCIATION OF EDMONTON. ALL RIGHTS RESERVED.Trademarks are owned or controlled by the Canadian Real Estate Association (CREA) and identify real estate professionals who are members of CREA (REALTOR®, REALTORS®) and/or the quality of services they provide (MLS®, Multiple Listing Service®)

Listing information last updated on May 9th, 2025 at 6:32pm MDT