

Courtesy Of Jeremy J Amyotte Of Real Broker

# \$119,900 - 103 10524 29 Avenue, Edmonton

MLS® #E4435336

**\$119,900**

2 Bedroom, 1.00 Bathroom, 945 sqft

Condo / Townhouse on 0.00 Acres

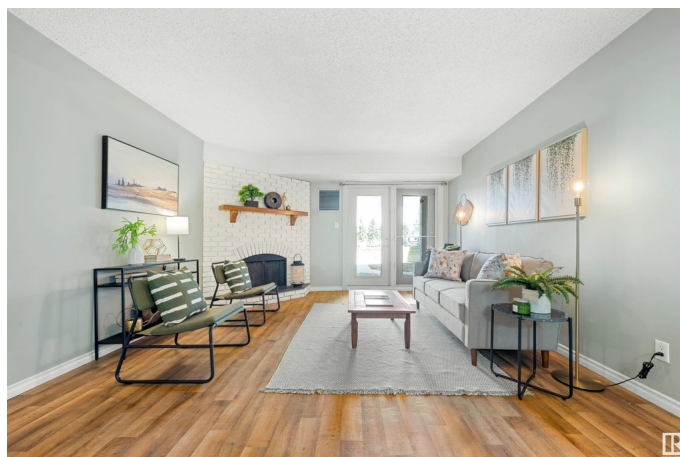
Ermineskin, Edmonton, AB

Spacious 2-bedroom condo in a prime location across from a park and steps to the LRT! This main floor unit offers direct access through patio doors—no need to go through the building. Inside, enjoy updated flooring, fresh paint, modern trim, and a newer furnace and hot water tank. The kitchen features quartz countertops, and the upgraded bathroom boasts a new double-sink vanity. The primary bedroom includes a walk-through closet with cheater access to the stylish 5pc bath. Both bedrooms and the living room are generously sized, plus there's a large in-suite storage closet. Walking distance to all amenities, including South Edmonton Common, and perfect for commuters!

Built in 1978

## Essential Information

MLS® #	E4435336
Price	\$119,900
Bedrooms	2
Bathrooms	1.00
Full Baths	1
Square Footage	945
Acres	0.00
Year Built	1978
Type	Condo / Townhouse



Sub-Type	Lowrise Apartment
Style	Single Level Apartment
Status	Active

### Community Information

Address	103 10524 29 Avenue
Area	Edmonton
Subdivision	Ermineskin
City	Edmonton
County	ALBERTA
Province	AB
Postal Code	T6J 4J2

### Amenities

Amenities	No Animal Home, No Smoking Home, Vinyl Windows
Parking	Stall

### Interior

Appliances	Dishwasher-Built-In, Microwave Hood Fan, Refrigerator, Stove-Electric
Heating	Forced Air-1, Natural Gas
Fireplace	Yes
Fireplaces	Brick Facing
# of Stories	4
Stories	1
Has Basement	Yes
Basement	None, No Basement

### Exterior

Exterior	Wood, Vinyl
Exterior Features	Park/Reserve, Schools, Shopping Nearby
Roof	Asphalt Shingles
Construction	Wood, Vinyl
Foundation	Concrete Perimeter

### Additional Information

Date Listed	May 8th, 2025
Days on Market	1
Zoning	Zone 16
Condo Fee	\$502

DATA IS DEEMED RELIABLE BUT IS NOT GUARANTEED ACCURATE BY THE REALTORS® ASSOCIATION OF EDMONTON. COPYRIGHT 2025 BY THE REALTORS® ASSOCIATION OF EDMONTON. ALL RIGHTS RESERVED.Trademarks are owned or controlled by the Canadian Real Estate Association (CREA) and identify real estate professionals who are members of CREA (REALTOR®, REALTORS®) and/or the quality of services they provide (MLS®, Multiple Listing Service®)

Listing information last updated on May 9th, 2025 at 7:17pm MDT