

\$629,000 - 17 53102 Rge Road 31, Rural Parkland County

MLS® #E4435287

\$629,000

4 Bedroom, 3.00 Bathroom, 1,417 sqft

Rural on 2.00 Acres

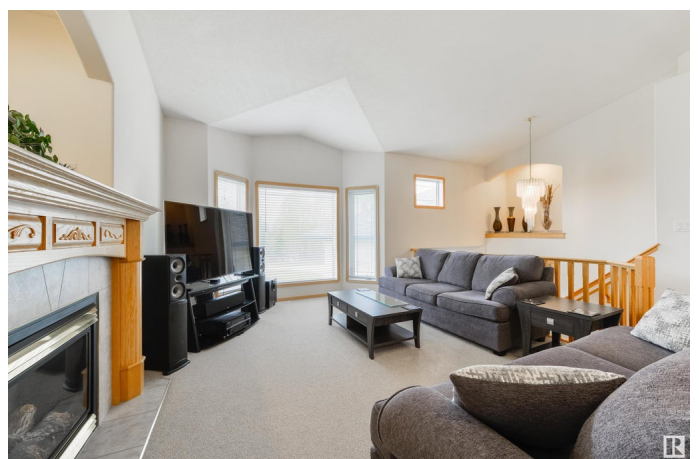
Clear Lake, Rural Parkland County, AB

CUSTOM-BUILT “this original-owner home is ready for its new family! Showcasing a beautiful & open-concept layout, features here include central A/C, vaulted ceilings, a large living room with cozy gas fireplace, great kitchen with center island, stainless appliances, separate dinette, and garden doors leading out to the deck, 4 total bedrooms including a king-sized owner’s suite with walk-in closet & 4pc ensuite, a fully-finished basement, and a HEATED & OVERSIZED double-attached garage to name a few. The property itself is an outdoor lover’s oasis “with a 2-tiered exterior deck (& wet bar set-up!), multiple seating areas, built-in firepit, flower & vegetable gardens throughout, and towering trees offering the perfect amount of privacy, you’re going to fall in love with this space. Located just a short drive from Spruce Grove & Stony Plain “your acreage-living dreams await!

Built in 2004

Essential Information

MLS® #	E4435287
Price	\$629,000
Bedrooms	4



Bathrooms	3.00
Full Baths	3
Square Footage	1,417
Acres	2.00
Year Built	2004
Type	Rural
Sub-Type	Detached Single Family
Style	Bi-Level
Status	Active

Community Information

Address	17 53102 Rge Road 31
Area	Rural Parkland County
Subdivision	Clear Lake
City	Rural Parkland County
County	ALBERTA
Province	AB
Postal Code	T0E 0N0

Amenities

Features	Air Conditioner, Deck, Fire Pit, No Animal Home, No Smoking Home, Parking-Extra, Patio, R.V. Storage, Vaulted Ceiling, Wet Bar, See Remarks
----------	---------------------------------------------------------------------------------------------------------------------------------------------

Interior

Interior Features	ensuite bathroom
Heating	Forced Air-1, Natural Gas
Fireplace	Yes
Stories	2
Has Basement	Yes
Basement	Full, Finished

Exterior

Exterior	Wood
Exterior Features	Backs Onto Park/Trees, Fruit Trees/Shrubs, Golf Nearby, Landscaped, Private Setting, Ravine View, Recreation Use, Treed Lot, Vegetable Garden, See Remarks
Construction	Wood
Foundation	Concrete Perimeter

Additional Information

Date Listed May 8th, 2025
Days on Market 4
Zoning Zone 90

DATA IS DEEMED RELIABLE BUT IS NOT GUARANTEED ACCURATE BY THE REALTORS® ASSOCIATION OF EDMONTON. COPYRIGHT 2025 BY THE REALTORS® ASSOCIATION OF EDMONTON. ALL RIGHTS RESERVED.Trademarks are owned or controlled by the Canadian Real Estate Association (CREA) and identify real estate professionals who are members of CREA (REALTOR®, REALTORS®) and/or the quality of services they provide (MLS®, Multiple Listing Service®)
Listing information last updated on May 12th, 2025 at 3:47am MDT