

Courtesy Of Dwight L Hayes Of Century 21 Leading

\$369,000 - 7 300 Queen Street, Spruce Grove

MLS® #E4435118

\$369,000

2 Bedroom, 2.50 Bathroom, 1,412 sqft

Condo / Townhouse on 0.00 Acres

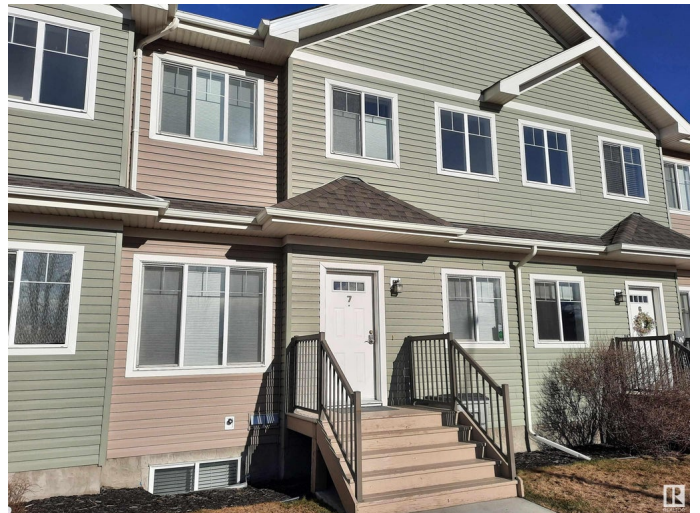
City Centre, Spruce Grove, AB

This immaculate home with 9'™ ceiling on the main, was professionally painted, complete with new carpeting, and laminate flooring. The spacious layout includes two huge master bedrooms with ensuites and walk-in closets, a second-floor laundry, and a window-lit wide staircase. The kitchen shines with abundant cabinetry, counter space, newer high-end appliances, and a pantry, complemented by a water filtration system piped to the sink and fridge. Enjoy a private balcony with a gas BBQ hook-up, spacious living and dining rooms, and a convenient half bath. The unfinished basement with a 9' ceiling and bathroom rough-in offers living space. Additional features include A/C, central vacuum. A single, finished attached garage with a faucet and floor drain, plus driveway and street parking, adds practicality. This 8-unit condo property has no age restrictions and allows small pets. This home has been owner-occupied since new and is in Like-New Condition!

Built in 2014

Essential Information

MLS® #	E4435118
Price	\$369,000
Bedrooms	2
Bathrooms	2.50



Full Baths	2
Half Baths	1
Square Footage	1,412
Acres	0.00
Year Built	2014
Type	Condo / Townhouse
Sub-Type	Townhouse
Style	2 Storey
Status	Active

Community Information

Address	7 300 Queen Street
Area	Spruce Grove
Subdivision	City Centre
City	Spruce Grove
County	ALBERTA
Province	AB
Postal Code	T7X 2J1

Amenities

Amenities	On Street Parking, Air Conditioner, Ceiling 9 ft., Hot Water Natural Gas, No Animal Home, No Smoking Home
Parking	Single Garage Attached

Interior

Interior Features	ensuite bathroom
Appliances	Dishwasher-Built-In, Dryer, Garage Control, Garage Opener, Microwave Hood Fan, Refrigerator, Stove-Electric, Vacuum Systems, Washer, See Remarks
Heating	Forced Air-1, Natural Gas
Stories	2
Has Basement	Yes
Basement	Full, Unfinished

Exterior

Exterior	Wood, Vinyl
Exterior Features	Back Lane, Flat Site, Landscaped
Roof	Asphalt Shingles
Construction	Wood, Vinyl

Foundation Concrete Perimeter

Additional Information

Date Listed May 8th, 2025
Days on Market 20
Zoning Zone 91
Condo Fee \$325

DATA IS DEEMED RELIABLE BUT IS NOT GUARANTEED ACCURATE BY THE REALTORS® ASSOCIATION OF EDMONTON. COPYRIGHT 2025 BY THE REALTORS® ASSOCIATION OF EDMONTON. ALL RIGHTS RESERVED.Trademarks are owned or controlled by the Canadian Real Estate Association (CREA) and identify real estate professionals who are members of CREA (REALTOR®, REALTORS®) and/or the quality of services they provide (MLS®, Multiple Listing Service®)
Listing information last updated on May 28th, 2025 at 1:02pm MDT