

\$199,800 - 1088 Lakewood Road, Edmonton

MLS® #E4435025

\$199,800

3 Bedroom, 2.00 Bathroom, 1,052 sqft

Condo / Townhouse on 0.00 Acres

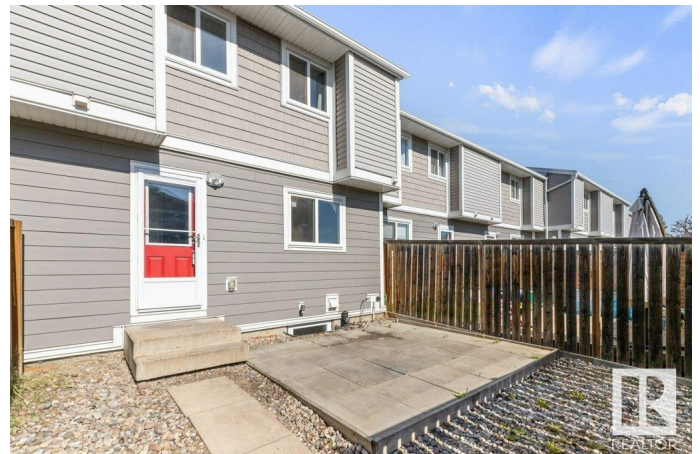
Tipaskan, Edmonton, AB

Wishing to build equity? Opportunity awaits in this 3 bedroom 3 bath townhome overlooking the park! This 1978 townhome has a large living room with a brick faced fireplace & two large windows overlooking the park along with direct access to the park. There is the original kitchen with a dining area on the other side that overlooks the yard, the main floor also has a 2 piece bath located at the main entrance. The upper level provides a good sized primary bedroom along with two more bedrooms & a well sized four piece bath. The basement is fully developed with a family room, two piece bath and a large storage, laundry, mechanical room. The yard provides a decent sized east facing patio and there are two energized assigned parking stalls right outside the backyard. Updated furnace & hot water tank. The association has completed a complete redo of the exteriors with new windows, doors, Hardie board siding & more! One of the best locations in the complex! Pet friendly with board approval, must be licensed.

Built in 1978

Essential Information

MLS® #	E4435025
Price	\$199,800
Bedrooms	3



Bathrooms	2.00
Full Baths	1
Half Baths	2
Square Footage	1,052
Acres	0.00
Year Built	1978
Type	Condo / Townhouse
Sub-Type	Townhouse
Style	2 Storey
Status	Active

Community Information

Address	1088 Lakewood Road
Area	Edmonton
Subdivision	Tipaskan
City	Edmonton
County	ALBERTA
Province	AB
Postal Code	T6K 3T7

Amenities

Amenities	No Smoking Home, Parking-Plug-Ins
Parking Spaces	2
Parking	Stall

Interior

Appliances	Dishwasher-Built-In, Dryer, Fan-Ceiling, Stove-Electric, Washer, Refrigerators-Two
Heating	Forced Air-1, Natural Gas
Fireplace	Yes
Fireplaces	Brick Facing
Stories	3
Has Basement	Yes
Basement	Full, Finished

Exterior

Exterior	Wood, Metal
Exterior Features	Backs Onto Park/Trees, Fenced, Flat Site, Low Maintenance Landscape, No Through Road, Playground Nearby, Public

	Transportation, Schools, Shopping Nearby
Roof	Asphalt Shingles
Construction	Wood, Metal
Foundation	Concrete Perimeter

School Information

Elementary	Tipaskan, St. Elizabeth
Middle	Edith Rogers, St. Hilda
High	J Percy Page, Holy Trinity

Additional Information

Date Listed	May 7th, 2025
Days on Market	6
Zoning	Zone 29
Condo Fee	\$371

DATA IS DEEMED RELIABLE BUT IS NOT GUARANTEED ACCURATE BY THE REALTORS® ASSOCIATION OF EDMONTON. COPYRIGHT 2025 BY THE REALTORS® ASSOCIATION OF EDMONTON. ALL RIGHTS RESERVED. Trademarks are owned or controlled by the Canadian Real Estate Association (CREA) and identify real estate professionals who are members of CREA (REALTOR®, REALTORS®) and/or the quality of services they provide (MLS®, Multiple Listing Service®)

Listing information last updated on May 13th, 2025 at 8:33pm MDT