

## \$524,900 - 56 Springfield Crescent, St. Albert

MLS® #E4433983

**\$524,900**

3 Bedroom, 3.00 Bathroom, 1,280 sqft

Single Family on 0.00 Acres

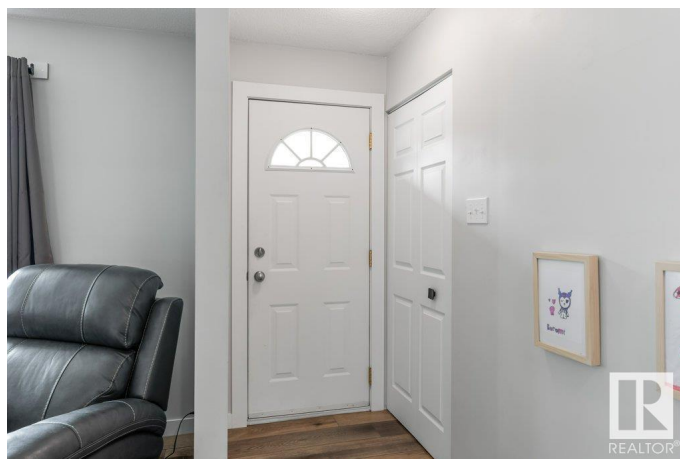
Sturgeon Heights, St. Albert, AB

Beautifully Renovated 1,279 sq. ft. bungalow on a quiet street, close to schools, parks, shopping, and more. This move-in ready home features a wide-open main floor with a stunning kitchen, quartz countertops, tile backsplash, huge island, and newer stainless steel appliances. The bright dining area opens to the backyard through patio doors. Three bedrooms on the main include a spacious primary with a 3-piece ensuite. The fully finished basement adds a large rec room, fourth bedroom, and beautiful 3-piece bath. Enjoy the oversized yard with a large patio, playhouse/shed, and newer white vinyl fencing. The heated, oversized double garage offers extra storage and cabinetry. Central A/C and a new electrical panel add even more value. This home is perfect inside and out—just move in and enjoy!

Built in 1967

### Essential Information

MLS® #	E4433983
Price	\$524,900
Bedrooms	3
Bathrooms	3.00
Full Baths	3
Square Footage	1,280
Acres	0.00



Year Built	1967
Type	Single Family
Sub-Type	Detached Single Family
Style	Bungalow
Status	Active

### Community Information

Address	56 Springfield Crescent
Area	St. Albert
Subdivision	Sturgeon Heights
City	St. Albert
County	ALBERTA
Province	AB
Postal Code	T8N 0K1

### Amenities

Amenities	Deck, Patio, See Remarks
Parking	Double Garage Detached, Heated, Insulated, See Remarks

### Interior

Interior Features	ensuite bathroom
Appliances	Air Conditioning-Central, Dishwasher-Built-In, Dryer, Garage Control, Garage Opener, Microwave Hood Fan, Refrigerator, Stove-Electric, Washer, Window Coverings
Heating	Forced Air-1, Natural Gas
Stories	2
Has Basement	Yes
Basement	Full, Finished

### Exterior

Exterior	Wood, Brick
Exterior Features	Fenced, Fruit Trees/Shrubs, Landscaped, Park/Reserve, Playground Nearby, Schools, Shopping Nearby
Roof	Asphalt Shingles
Construction	Wood, Brick
Foundation	Concrete Perimeter

### Additional Information

Date Listed	May 2nd, 2025
Days on Market	1

## Zoning

## Zone 24

DATA IS DEEMED RELIABLE BUT IS NOT GUARANTEED ACCURATE BY THE REALTORS® ASSOCIATION OF EDMONTON. COPYRIGHT 2025 BY THE REALTORS® ASSOCIATION OF EDMONTON. ALL RIGHTS RESERVED. Trademarks are owned or controlled by the Canadian Real Estate Association (CREA) and identify real estate professionals who are members of CREA (REALTOR®, REALTORS®) and/or the quality of services they provide (MLS®, Multiple Listing Service®)

Listing information last updated on May 3rd, 2025 at 10:17am MDT