

\$579,900 - 1912 121 Street, Edmonton

MLS® #E4433975

\$579,900

3 Bedroom, 2.50 Bathroom, 2,234 sqft

Single Family on 0.00 Acres

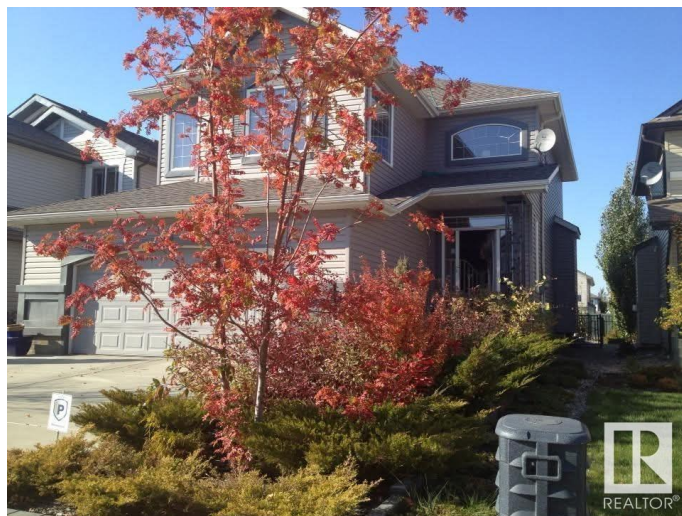
Rutherford (Edmonton), Edmonton, AB

PRICED to SELL & Exceptional value - lowest \$\$/sqft for SF in Rutherford!! Backing onto a tranquil walking trail in the heart of Rutherford! This executive 2-storey offers 2,200+ sqft of A/C luxury, 3 spacious bdrms & 2.5 baths. Main flr features 9' ceilings, rich hardwood, expansive windows & cozy gas F/P. Gourmet kitchen w/ lrg island, corner pantry, newer fridge & cabinetry w/ crown molding. Formal dining rm showcases B/I wine cabinets & elegant coffered ceilings. Upstairs: stunning primary suite w/ W/I closet & spa-inspired 5pc ensuite, vaulted bonus rm, 2 addâ€™ bdrms & 4pc bath. Beautifully landscaped yard w/ B/I BBQ & 24' water feature w/ dual cascading fountains & center bridgeâ€™your private oasis for summer retreat! XL 22'x24' heated dbl garage. Close to schools, parks, shopping, transit, airport & major routes. Great family homeâ€™must see!

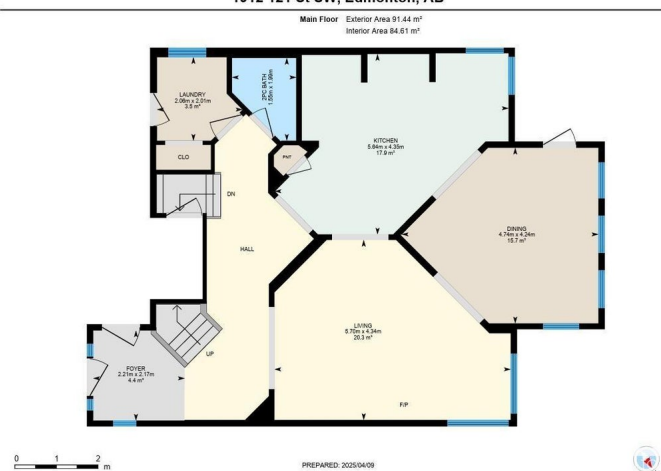
Built in 2006

Essential Information

MLS® #	E4433975
Price	\$579,900
Bedrooms	3
Bathrooms	2.50
Full Baths	2
Half Baths	1



1912 121 St SW, Edmonton, AB



Square Footage	2,234
Acres	0.00
Year Built	2006
Type	Single Family
Sub-Type	Detached Single Family
Style	2 Storey
Status	Active

Community Information

Address	1912 121 Street
Area	Edmonton
Subdivision	Rutherford (Edmonton)
City	Edmonton
County	ALBERTA
Province	AB
Postal Code	T6W 0A6

Amenities

Amenities	Air Conditioner, Ceiling 9 ft., Deck, Detectors Smoke, Hot Water Natural Gas, Vaulted Ceiling, Vinyl Windows
Parking	Double Garage Attached, Over Sized

Interior

Interior Features	ensuite bathroom
Appliances	Air Conditioning-Central, Dishwasher-Built-In, Dryer, Garage Control, Garage Opener, Microwave Hood Fan, Refrigerator, Stove-Electric, Washer, Window Coverings
Heating	Forced Air-1, Natural Gas
Stories	2
Has Basement	Yes
Basement	Full, Unfinished

Exterior

Exterior	Wood, Vinyl
Exterior Features	Fenced, Flat Site, Landscaped, Playground Nearby, Public Transportation, Schools, Shopping Nearby, See Remarks
Roof	Asphalt Shingles
Construction	Wood, Vinyl
Foundation	Slab

School Information

Elementary	Johnny Bright School
Middle	Johnny Bright School
High	Dr. Anne Anderson School

Additional Information

Date Listed	May 2nd, 2025
Days on Market	1
Zoning	Zone 55
HOA Fees	150
HOA Fees Freq.	Annually

DATA IS DEEMED RELIABLE BUT IS NOT GUARANTEED ACCURATE BY THE REALTORS® ASSOCIATION OF EDMONTON. COPYRIGHT 2025 BY THE REALTORS® ASSOCIATION OF EDMONTON. ALL RIGHTS RESERVED.Trademarks are owned or controlled by the Canadian Real Estate Association (CREA) and identify real estate professionals who are members of CREA (REALTOR®, REALTORS®) and/or the quality of services they provide (MLS®, Multiple Listing Service®)

Listing information last updated on May 3rd, 2025 at 11:02am MDT