

Courtesy Of Kendra N Chisholm Of CIR Realty

\$459,900 - 2324 67a Street, Edmonton

MLS® #E4433772

\$459,900

3 Bedroom, 2.50 Bathroom, 1,483 sqft

Single Family on 0.00 Acres

Summerside, Edmonton, AB

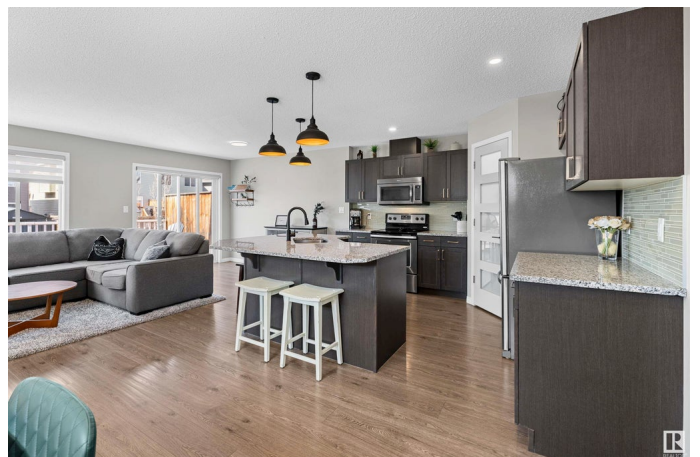
LAKE ACCESS | OPEN CONCEPT LIVING | CORNER LOT WITH LARGE YARD. Step into this beautifully maintained half duplex that blends style, functionality, & comfort. The open-concept main floor features spacious living & dining areas that flow seamlessly into the gourmet kitchen—complete with a center island with breakfast bar, granite countertops, rich dark cabinetry, stainless steel appliances, a corner pantry, & a perfect nook for your coffee bar. Upstairs, youâ€™™ll find a bright family room, a full bathroom, & three expansive bedrooms, including a stylish primary suite. Enjoy the convenience of upper floor laundry & stay comfortable year-round with central A/C. Outside, this home sits on a corner lot with a massive yard & a large composite deck—perfect for outdoor entertaining. Located in the desirable community of Summerside, youâ€™™ll enjoy private lake access to a 32 acre freshwater lake with a private beach club for swimming, kayaking or paddleboarding, tennis courts, parks, & excellent nearby schools.

Built in 2015

Essential Information

MLS® # E4433772

Price \$459,900



| | |
|----------------|---------------|
| Bedrooms | 3 |
| Bathrooms | 2.50 |
| Full Baths | 2 |
| Half Baths | 1 |
| Square Footage | 1,483 |
| Acres | 0.00 |
| Year Built | 2015 |
| Type | Single Family |
| Sub-Type | Half Duplex |
| Style | 4 Level Split |
| Status | Active |

Community Information

| | |
|-------------|-----------------|
| Address | 2324 67a Street |
| Area | Edmonton |
| Subdivision | Summerside |
| City | Edmonton |
| County | ALBERTA |
| Province | AB |
| Postal Code | T6X 2A9 |

Amenities

| | |
|----------------|---|
| Amenities | Air Conditioner, Deck, Lake Privileges |
| Parking Spaces | 1 |
| Parking | Front Drive Access, Insulated, Single Garage Attached |

Interior

| | |
|--------------|---|
| Appliances | Air Conditioning-Central, Dishwasher-Built-In, Dryer, Garage Control, Garage Opener, Microwave Hood Fan, Refrigerator, Storage Shed, Stove-Electric, Washer |
| Heating | Forced Air-1, Natural Gas |
| Fireplace | Yes |
| Fireplaces | Mantel |
| Stories | 3 |
| Has Basement | Yes |
| Basement | Full, Finished |

Exterior

| | |
|----------|--------------------|
| Exterior | Wood, Stone, Vinyl |
|----------|--------------------|

| | |
|-------------------|---|
| Exterior Features | Airport Nearby, Corner Lot, Fenced, Flat Site, Lake Access Property, No Back Lane, Playground Nearby, Public Transportation, Schools, Shopping Nearby |
| Roof | Asphalt Shingles |
| Construction | Wood, Stone, Vinyl |
| Foundation | Concrete Perimeter |

School Information

| | |
|------------|----------------------------|
| Elementary | M. Strembitsky / Div Mercy |
| Middle | M. Strembitsky / M. Mireau |
| High | J. Percy Page |

Additional Information

| | |
|----------------|---------------|
| Date Listed | May 1st, 2025 |
| Days on Market | 2 |
| Zoning | Zone 53 |
| HOA Fees | 453.02 |
| HOA Fees Freq. | Annually |

DATA IS DEEMED RELIABLE BUT IS NOT GUARANTEED ACCURATE BY THE REALTORS® ASSOCIATION OF EDMONTON. COPYRIGHT 2025 BY THE REALTORS® ASSOCIATION OF EDMONTON. ALL RIGHTS RESERVED. Trademarks are owned or controlled by the Canadian Real Estate Association (CREA) and identify real estate professionals who are members of CREA (REALTOR®, REALTORS®) and/or the quality of services they provide (MLS®, Multiple Listing Service®)

Listing information last updated on May 3rd, 2025 at 1:17am MDT