

\$444,900 - 3726 9 Street, Edmonton

MLS® #E4432817

\$444,900

3 Bedroom, 2.50 Bathroom, 1,408 sqft
Single Family on 0.00 Acres

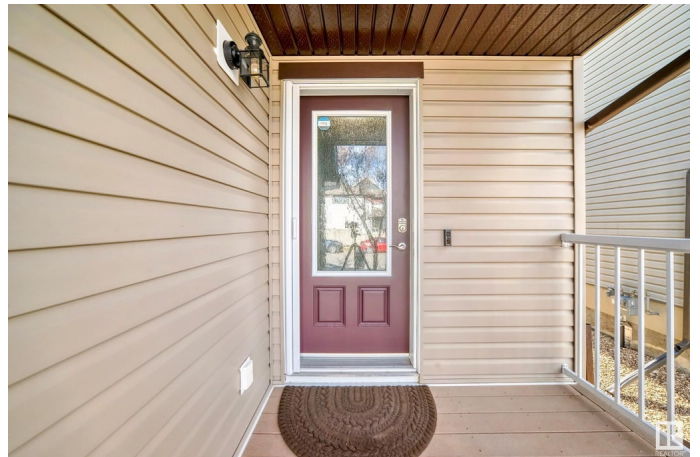
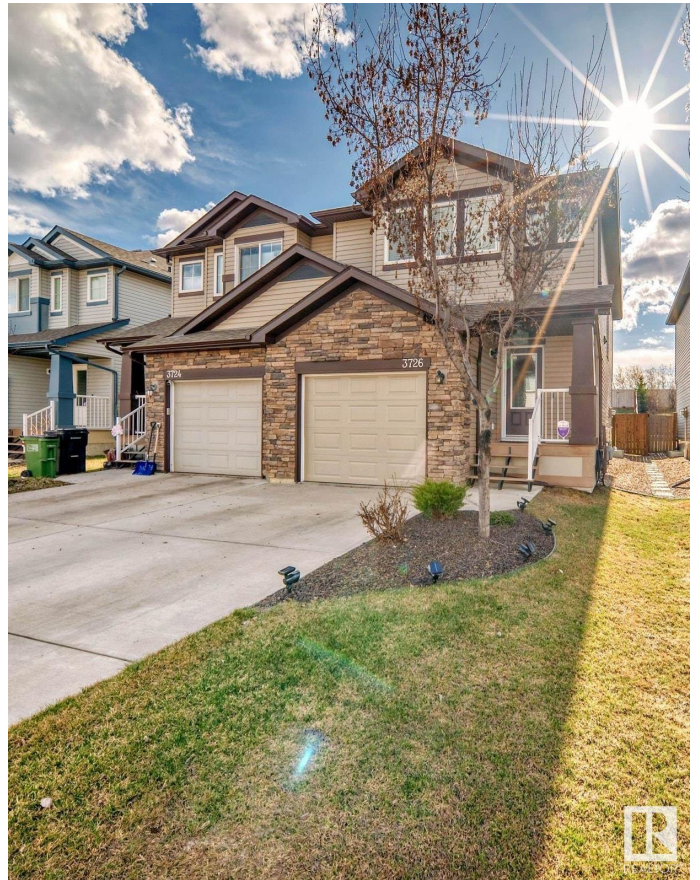
Maple Crest, Edmonton, AB

Welcome to your stylish and desirable home on Maple Crescent! Nestled in a GREAT LOCATION, this 3-bedroom, 2.5-bathroom, two-storey residence offers 1400 sq.ft of thoughtfully designed living space. The open concept main floor is graced by a gas fireplace, perfect for cozy gatherings, while huge windows bathe the space in natural light. The modern kitchen boasts newer appliances and stunning granite countertops, making it a chefs delight. Enjoy recent upgrades that include sleek new faucets, contemporary lighting fixtures, fresh paint throughout, including the garage door, and a new hot water on demand system with a 15-year warranty. Both the composite front porch and back deck are perfect for outdoor relaxation and entertainment. A bonus room on the upper level adds flexibility for an office, den, or play area. Completing this charming home is an oversized single attached garage. Located close to all amenities, including schools, this home combines convenience with comfort.

Built in 2012

Essential Information

MLS® #	E4432817
Price	\$444,900
Bedrooms	3



Bathrooms	2.50
Full Baths	2
Half Baths	1
Square Footage	1,408
Acres	0.00
Year Built	2012
Type	Single Family
Sub-Type	Half Duplex
Style	2 Storey
Status	Active

Community Information

Address	3726 9 Street
Area	Edmonton
Subdivision	Maple Crest
City	Edmonton
County	ALBERTA
Province	AB
Postal Code	T6T 0S2

Amenities

Amenities	Deck, Detectors Smoke, No Animal Home
Parking	Single Garage Attached

Interior

Interior Features	ensuite bathroom
Appliances	Air Conditioning-Central, Dishwasher-Built-In, Dryer, Fan-Ceiling, Freezer, Garage Control, Garage Opener, Microwave Hood Fan, Refrigerator, Stove-Electric, Washer, Window Coverings, TV Wall Mount
Heating	Forced Air-1, Natural Gas
Fireplace	Yes
Fireplaces	Mantel
Stories	2
Has Basement	Yes
Basement	Full, Unfinished

Exterior

Exterior	Wood, Brick, Vinyl
Exterior Features	Fenced, Public Transportation, Schools, Shopping Nearby

Roof Asphalt Shingles
Construction Wood, Brick, Vinyl
Foundation Concrete Perimeter

Additional Information

Date Listed April 25th, 2025
Days on Market 7
Zoning Zone 30



DATA IS DEEMED RELIABLE BUT IS NOT GUARANTEED ACCURATE BY THE REALTORS® ASSOCIATION OF EDMONTON. COPYRIGHT 2025 BY THE REALTORS® ASSOCIATION OF EDMONTON. ALL RIGHTS RESERVED. Trademarks are owned or controlled by the Canadian Real Estate Association (CREA) and identify real estate professionals who are members of CREA (REALTOR®, REALTORS®) and/or the quality of services they provide (MLS®, Multiple Listing Service®)

Listing information last updated on May 2nd, 2025 at 3:32am MDT