

\$1,995,000 - 386 52224 Range Road 231, Rural Strathcona County

MLS® #E4431964

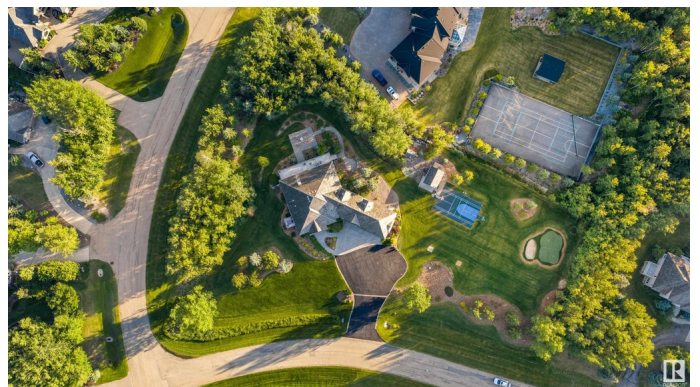
\$1,995,000

4 Bedroom, 4.50 Bathroom, 3,158 sqft

Rural on 1.99 Acres

Deer Mountain, Rural Strathcona County, AB

Where luxury living meets an active, outdoor lifestyle, 3 km from Sherwood Park. This stunning walk-out bungalow with loft on 1.99 acres was designed with both comfort and connection in mind. Inside, thoughtful upgrades and high-end finishes elevate every corner, from the chef-inspired kitchen to the primary suite, complete with a walk-in closet and private dressing room. Four spacious bedrooms, a theatre room, home gym and a lower-level wet bar and games room create the perfect blend of everyday function and entertainerâ€™s flair. Step outside and youâ€™ll find yourself immersed in a quiet retreat made for living well, whether you're practicing on the putting green, shooting hoops on the sports court, or hosting on the two-tiered decks. The upper deck features a two-way fireplace and sweeping views, while the lower level opens to interlocking stonework and beautifully landscaped grounds, all cared for by an UG sprinkler system. With spaces designed to bring people together, this is more than just a home!



Built in 2010

Essential Information

MLS® #

E4431964

Price	\$1,995,000
Bedrooms	4
Bathrooms	4.50
Full Baths	4
Half Baths	1
Square Footage	3,158
Acres	1.99
Year Built	2010
Type	Rural
Sub-Type	Detached Single Family
Style	Bungalow
Status	Active

Community Information

Address	386 52224 Range Road 231
Area	Rural Strathcona County
Subdivision	Deer Mountain
City	Rural Strathcona County
County	ALBERTA
Province	AB
Postal Code	T8B 1N3

Amenities

Features	Air Conditioner, Deck, Exterior Walls- 2"x6", Fire Pit, Patio, Sprinkler Sys-Underground, Walkout Basement, Wet Bar, See Remarks, HRV System, Natural Gas BBQ Hookup
----------	--

Interior

Interior Features	ensuite bathroom
Heating	Fan Coil, In Floor Heat System, Natural Gas, Water
Fireplace	Yes
Stories	3
Has Basement	Yes
Basement	Full, Finished

Exterior

Exterior	Wood
Exterior Features	Golf Nearby, Landscaped, No Back Lane, Private Setting, See Remarks
Construction	Wood

Foundation Concrete Perimeter

Additional Information

Date Listed April 21st, 2025

Days on Market 80

Zoning Zone 80

DATA IS DEEMED RELIABLE BUT IS NOT GUARANTEED ACCURATE BY THE REALTORS® ASSOCIATION OF EDMONTON. COPYRIGHT 2025 BY THE REALTORS® ASSOCIATION OF EDMONTON. ALL RIGHTS RESERVED.Trademarks are owned or controlled by the Canadian Real Estate Association (CREA) and identify real estate professionals who are members of CREA (REALTOR®, REALTORS®) and/or the quality of services they provide (MLS®, Multiple Listing Service®)

Listing information last updated on July 10th, 2025 at 10:17am MDT