

\$0 - 2003 Tudor Glen Place, St. Albert

MLS® #E4431112

\$0

0 Bedroom, 0.00 Bathroom,
Retail on 0.00 Acres

Grandin, St. Albert, AB

Main floor retail space of 1,455 sq. ft. New ceiling, lights & flooring. Shopping plaza on Gervais Road between Highway 2 N and 170 Street into Edmonton - Easy access. Ready for occupancy!

Built in 1981

Essential Information

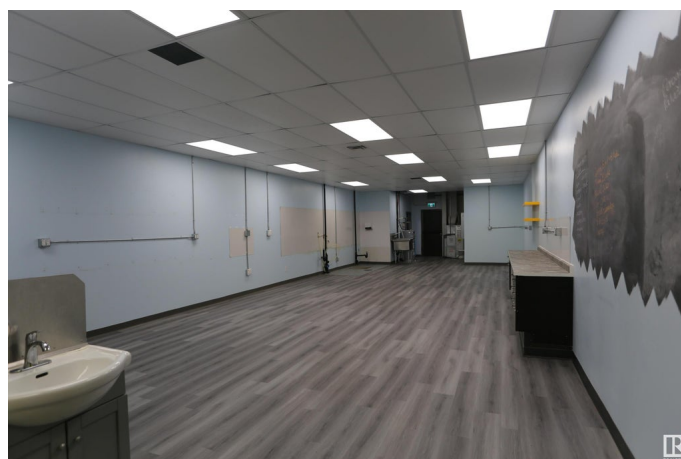
MLS® #	E4431112
Bathrooms	0.00
Acres	0.00
Year Built	1981
Type	Retail
Status	Active

Community Information

Address	2003 Tudor Glen Place
Area	St. Albert
Subdivision	Grandin
City	St. Albert
County	ALBERTA
Province	AB
Postal Code	T8N 3V4

Exterior

Exterior	Block
Construction	Block



Additional Information

Date Listed April 16th, 2025
Days on Market 26
Zoning Zone 24

DATA IS DEEMED RELIABLE BUT IS NOT GUARANTEED ACCURATE BY THE REALTORS® ASSOCIATION OF EDMONTON. COPYRIGHT 2025 BY THE REALTORS® ASSOCIATION OF EDMONTON. ALL RIGHTS RESERVED.Trademarks are owned or controlled by the Canadian Real Estate Association (CREA) and identify real estate professionals who are members of CREA (REALTOR®, REALTORS®) and/or the quality of services they provide (MLS®, Multiple Listing Service®)
Listing information last updated on May 12th, 2025 at 3:47pm MDT