

\$0 - 4201 Parkwest Place, Stony Plain

MLS® #E4430493

\$0

0 Bedroom, 0.00 Bathroom,
Retail on 0.00 Acres

Sun Meadows, Stony Plain, AB

For more information, please click on "View Listing on Realtor Website". New Retail units form size 985-4180 Sq Ft on prime location with Direct Exit on Highway 16A and Veterans Boulevard in Stony Plain with traffic of over 29,000 Vehicles per day. Busy plaza with other popular businesses like A&W , Circle K, Esso, Wahoo Swim School, Day care, Pizza 73, Liquor Store and others. Perfect Opportunity to open your Restaurant, ice cream shop, Pharmacy, Medical Clinic, Barber Shop, Educational classes and many more. Photos contain rendering drawing. Construction to be completed still. Taxes not yet assessed.

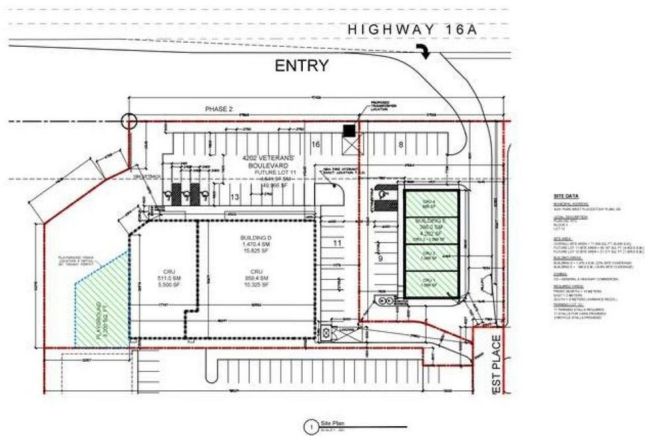
Built in 2025

Essential Information

MLS® #	E4430493
Bathrooms	0.00
Acres	0.00
Year Built	2025
Type	Retail
Status	Active

Community Information

Address	4201 Parkwest Place
Area	Stony Plain



Subdivision	Sun Meadows
City	Stony Plain
County	ALBERTA
Province	AB
Postal Code	T7Z 0N1

Exterior

Exterior	Wood Frame
Construction	Wood Frame

Additional Information

Date Listed	April 11th, 2025
Days on Market	31
Zoning	Zone 91

DATA IS DEEMED RELIABLE BUT IS NOT GUARANTEED ACCURATE BY THE REALTORS® ASSOCIATION OF EDMONTON. COPYRIGHT 2025 BY THE REALTORS® ASSOCIATION OF EDMONTON. ALL RIGHTS RESERVED. Trademarks are owned or controlled by the Canadian Real Estate Association (CREA) and identify real estate professionals who are members of CREA (REALTOR®, REALTORS®) and/or the quality of services they provide (MLS®, Multiple Listing Service®)

Listing information last updated on May 12th, 2025 at 3:47pm MDT