

Courtesy Of Adam T Dirksen Of Rimrock Real Estate

\$1,399,000 - 76 25214 Coal Mine Road, Rural Sturgeon County

MLS® #E4428898

\$1,399,000

5 Bedroom, 3.50 Bathroom, 3,752 sqft

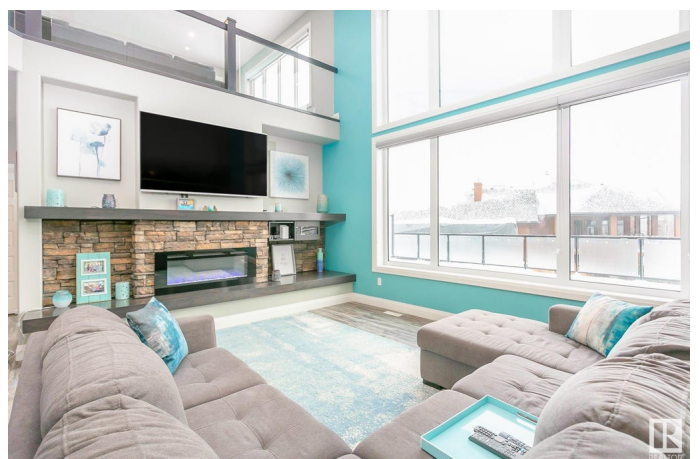
Rural on 0.50 Acres

Greystone Manor, Rural Sturgeon County, AB

UNPARALLELED OPPORTUNITY TO OWN A STUNNING 5 BED, 5 BATH, 3752 SQFT HOME ON A HALF-ACRE LOT WITH FULL CITY SERVICES! Just minutes from St. Albert, this exquisite two-storey residence has undergone \$350,000 in enhancements since new, including professional landscaping with irrigation, a finished basement featuring a wet bar and dedicated theatre/gaming room, custom window coverings, a 6000 sqft concrete driveway with dual entrances and RV parking, and one of the largest decks youâ€™ll ever see! The main floor offers two versatile densâ€”one ideal as a bedroomâ€”vaulted ceilings, expansive two-storey windows, and an open-concept kitchen and living area. The gourmet kitchen features built-in appliances, granite countertops, and an oversized pantry, perfect for family living. Upstairs, you'll find three spacious bedrooms, including a luxurious primary suite with a custom walk-in closet and elegant ensuite. The walkout basement boasts a stylish wet bar, entertainment area, two additional beds and views of the pond.

Built in 2018

Essential Information



MLS® #	E4428898
Price	\$1,399,000
Bedrooms	5
Bathrooms	3.50
Full Baths	3
Half Baths	1
Square Footage	3,752
Acres	0.50
Year Built	2018
Type	Rural
Sub-Type	Detached Single Family
Style	2 Storey
Status	Active

Community Information

Address	76 25214 Coal Mine Road
Area	Rural Sturgeon County
Subdivision	Greystone Manor
City	Rural Sturgeon County
County	ALBERTA
Province	AB
Postal Code	T8T 0A8

Amenities

Features	Ceiling 10 ft., Ceiling 9 ft., Walkout Basement
Parking Spaces	6

Interior

Interior Features	ensuite bathroom
Heating	Forced Air-1, Natural Gas
Fireplace	Yes
Stories	3
Has Basement	Yes
Basement	Full, Finished

Exterior

Exterior	Wood
Exterior Features	Backs Onto Lake, Corner Lot, Fruit Trees/Shrubs, Golf Nearby, Lake View, Shopping Nearby, Stream/Pond

Construction	Wood
Foundation	Concrete Perimeter

Additional Information

Date Listed	April 2nd, 2025
Days on Market	31
Zoning	Zone 60

DATA IS DEEMED RELIABLE BUT IS NOT GUARANTEED ACCURATE BY THE REALTORS® ASSOCIATION OF EDMONTON. COPYRIGHT 2025 BY THE REALTORS® ASSOCIATION OF EDMONTON. ALL RIGHTS RESERVED.Trademarks are owned or controlled by the Canadian Real Estate Association (CREA) and identify real estate professionals who are members of CREA (REALTOR®, REALTORS®) and/or the quality of services they provide (MLS®, Multiple Listing Service®)

Listing information last updated on May 3rd, 2025 at 11:17am MDT