

\$379,900 - Rr 212 & Twp Rd 534, Rural Strathcona County

MLS® #E4396568

\$379,900

0 Bedroom, 0.00 Bathroom,
Rural on 18.90 Acres

None, Rural Strathcona County, AB

Located 10 minutes from town and minutes to Ardrossan schools, this 18.9 acre parcel offers a wonderful build site and a great place to build your new country home. Post and rail fencing is installed along frontage of lots.



Essential Information

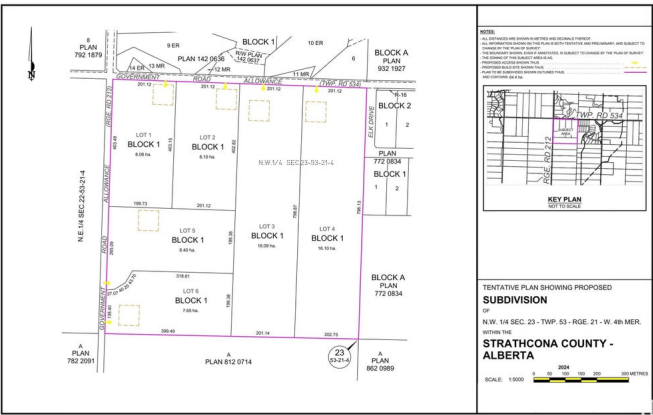
| | |
|-----------|-----------------|
| MLS® # | E4396568 |
| Price | \$379,900 |
| Bathrooms | 0.00 |
| Acres | 18.90 |
| Type | Rural |
| Sub-Type | Vacant Lot/Land |
| Status | Active |

Community Information

| | |
|-------------|-------------------------|
| Address | Rr 212 & Twp Rd 534 |
| Area | Rural Strathcona County |
| Subdivision | None |
| City | Rural Strathcona County |
| County | ALBERTA |
| Province | AB |
| Postal Code | T8E 2C8 |

Exterior

| | |
|-------------------|--|
| Exterior Features | Environmental Reserve, Private Setting |
|-------------------|--|



Additional Information

Date Listed July 9th, 2024
Days on Market 298
Zoning Zone 80

DATA IS DEEMED RELIABLE BUT IS NOT GUARANTEED ACCURATE BY THE REALTORS® ASSOCIATION OF EDMONTON. COPYRIGHT 2025 BY THE REALTORS® ASSOCIATION OF EDMONTON. ALL RIGHTS RESERVED.Trademarks are owned or controlled by the Canadian Real Estate Association (CREA) and identify real estate professionals who are members of CREA (REALTOR®, REALTORS®) and/or the quality of services they provide (MLS®, Multiple Listing Service®)
Listing information last updated on May 3rd, 2025 at 12:47am MDT